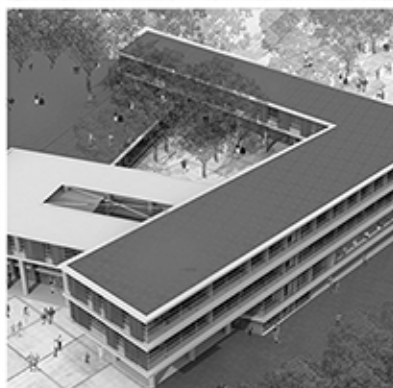
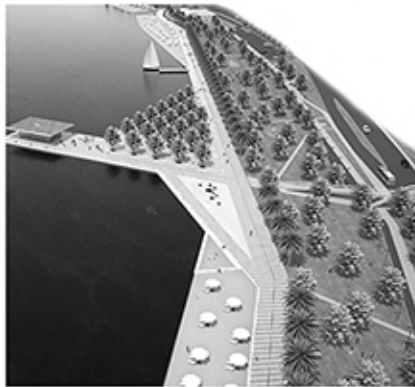




M artı D Mimarlık

1987 - 2020







## M artı D Mimarlık

### Dürrin Süer

In 1987 she graduated from 9 Eylül University, Faculty of Architecture. She has completed Masters and PhD Degrees in the same university. Between 1987 – 2006 she has worked as academician in 9 Eylül University, Faculty of Architecture. She has many articles published in architectural magazines such as Yapı, Mimarlık, Arradamento Mimarlık, Ege Mimarlık. Furthermore, he has been jury in many architectural competitions, he has been speaker in various conferences. She has been working in M artı D Mimarlık as founder and partner since 2007.

M artı D Mimarlık was founded in 1987 in İzmir by Metin Kılıç and Dürrin Süer. They design various types of projects in various scales such as residential, commercial, healthcare, educational and urban design. With their intention that unites academic and practical skills, they contribute to today's architecture culture.



### Metin Kılıç

In 1985 he graduated from 9 Eylül University, Faculty of Architecture. He has been working and since 1987 in M artı D Mimarlık as founder and partner. He has many projects such as hospitals, educational institutions, hospitals, residences, commercial buildings. He has been nominated for National Architecture Prize nominee in 2007 and in 2012 he has won National Architecture Prize. He has been principal of İSMD between 2013-2015. Furthermore, he has been jury in many architectural competitions, he has been speaker in various conferences and he is a part-time lecturer in architecture schools.

### Ekip

Ali Can Helvacioğlu [Architect, İEU, 2011]

Engin Yavuz [Architect, DEU, 2017]

Derya Damla İdi [Architect, İYTE, 2018]

## ÖDÜLLER

- Antalya Kepez Belediyesi Turgut Cansever Uluslararası Mimarlık Ödülleri, Özel Ödül, 2019
- Gaziemir Aktepe -Emrez Kentsel Tasarım ve Mimari Fikir Yarışması, Eşdeğer Mansiyon, 2015
- İzmir Konak Belediyesi Hizmet Binası ve Yakın Çevresi Düzenlenmesi Mimari Proje Yarışması, Eşdeğer Mansiyon, 2015
- İzmir Büyükşehir Belediyesi Akdeniz Akademisi Tasarım Koridorları Ulusal Fikir Yarışması, Eşdeğer Ödül, 2014
- TC MEB Eğitim Kampüsleri 3. Grup, Kütahya Tavşanlı Kampüsü Ön Seçimli Davetli Mimari Proje Yarışması, Mansiyon, 2013
- TC MEB Eğitim Kampüsleri 2. Grup Kahramanmaraş Kampüsü Ön Seçimli Davetli Mimari Proje Yarışması, Mansiyon, 2013
- OİB Mesleki ve Teknik Anadolu Lisesi, 13. Ulusal Mimarlık Yapı Dalı Ödülü, 2012
- Özel İAOSB NU Mesleki ve Teknik Anadolu Lisesi Çağrılı Mimari Proje Yarışması, 1. Ödül, 2012
- OİB Mesleki ve Teknik Anadolu Lisesi, ARKİTERA İşveren Ödülü, 2011
- OİB Mesleki ve Teknik Anadolu Lisesi, TBMM Üstün Hizmet Ödülü, 2010
- Denizli Hükümet Konağı Mimari Projesi ve Yakın Çevresi Kentsel Tasarım Proje Yarışması, Satın Alma, 2009
- OİB Mesleki ve Teknik Anadolu Lisesi, Çağrılı Mimari Proje Yarışması, 1. Ödül, 2008
- DEÜ Mimarlık Fakültesi Binası Sınırlı Katılımlı Mimari Proje Yarışması, 1. Ödül, 2002
- Mimaride Doğal Taş Kullanımı Yarışması İzmir Marble98, Mansiyon, 1998



## PROJELER

### 2020

- Torbalı Belediyesi Belediye Hizmet Binası, Pazaryeri ve Otopark ile Yakın Çevresi Ulusal Mimari Proje Yarışması

### 2019

- MEB Karşıyaka MK Güzel Sanatlar Lisesi
- Salihli ŞK Evleri Öneri Proje

### 2018

- EMOT Hastanesi Ek Binası
- Bayraklı Sahil Üst Geçit
- Bayraklı Sahil Üst Geçit 2
- Bandırma Cin Çukuru Öneri Proje

### 2017

- Karabağlar Belediyesi Kamusal Açık Mekan ve Kent Meydanı Kentsel Tasarım Proje Yarışması
- Buca Gösteri Sanatları Merkezi
- Torbalı'da Apartman

### 2016

- Balıkesir Büyükşehir Belediye Hizmet Binası Ulusal Mimari Proje Yarışması
- İMES Hizmet Binası Öneri Proje
- Selçuk Konut Sitesi Öneri Proje
- Caferağa Spor ve Kültür Merkezi Ulusal Mimari Proje Yarışması
- Söke Yıldız Apartmanı
- İnecik - Karaburun Zeytinçe Okulu

### 2015

- Kapadokya Uçhisar-Göreme Gezinti Rotası Öneri Proje
- Antalya Muratpaşa Belediyesi Çok Amaçlı Gösteri Merkezi Mimari Fikir Projesi Yarışması
- Gaziemir Aktepe -Emrez Kentsel Tasarım ve Mimari Fikir Yarışması
- İzmir Konak Belediyesi Hizmet Binası ve Yakın Çevresinin Düzenlenmesi
- Mimari Proje Yarışması

### 2014

- Tasarım Koridorları Ulusal Fikir Yarışması
- Çanakkale Belediyesi Sosyal Konutlar Mevkii Kentsel Yenileme Ulusal Mimari Proje Yarışması
- Adana Ticaret Odası Ulusal Mimari Proje Yarışması
- Kemalpaşa Erbeknif Konut Sitesi
- Tuzla Ofis Binası Öneri Proje

### 2013

- TC MEB Eğitim Kampüsleri Ön Seçimli Davetli Mimari Proje Yarışması, Tavşanlı
- İZKA Hizmet Binası Ulusal Mimari Proje Yarışması
- TC MEB Eğitim Kampüsleri Ön Seçimli Davetli Mimari Proje Yarışması, Kahramanmaraş
- Jeoloji Mühendisleri Odası İzmir Şube Binası
- Susurluk Vadi Misya Kaplıca ve Devremülk
- İZTEKGEB İnovasyon Merkezi
- Vitalia Konutları ve Çarşısı
- Atakalp Hastanesi Ek Binası

### 2012

- Katipoğlu Apartmanı - Turgutlu
- Beyaz Vadi Park, Narlıdere
- Asma Bahçeler
- ESG Evi – Gödence Köyü
- Vitalia Konutları ve Çarşısı Öneri Proje
- Urla Güvendik Belediye Dinlenme Tesisi Öneri Proje
- Özel İAOSB NU Mesleki ve Teknik Anadolu Lisesi Çağrılı Mimari Proje Yarışması
- İzmir Kıyı Tasarımı Fikir ve Uygulama Projesi
- Asma Bahçeler Satış Ofisi

### 2011

- Şişli Lisesi Ulusal Mimari Proje Yarışması
- Troya Müzesi Mimari Proje Yarışması

### 2010

- Bornova Belediyesi Yeşilova Höyüğü Ziyaretçi Merkezi Mimari Proje Yarışması

### 2009

- Denizli Hükümet Konağı Mimari Projesi ve Yakın Çevresi Kentsel Tasarım Proje Yarışması

## 2008

- OİB Mesleki ve Teknik Anadolu Lisesi Çağrılı Mimari Proje Yarışması
- Fethiye Belediyesi Alışveriş ve Yaşam Merkezi Ulusal Mimari Proje Yarışması
- AU Evi Öneri Proje
- Güzelbahçe Konut Sitesi Öneri Proje
- İzmir Otel Öneri Proje

## 2007

- Özel Akut Kalp Damar Hastanesi
- Narkent İkiyüz Konutları Öneri Proje
- Urla Sağmal İnek Çiftliği
- Urla İskele Restoran - Kafeterya
- Mavisu Evleri
- Mavisu Vilları Öneri Proje
- Urla Kent Meydanı ve Ticaret Merkezi
- Mavişehir Konut Sitesi Öneri Proje
- Çiğli Yüksek Yapı Konut Bloğu Öneri Proje
- Alaçatı 8 Ev Öneri Proje

## 2006

- İçmeler Evleri Öneri Proje
- Olive Park Evleri
- NY Evi Öneri Proje

## 2005

- EM Evi

## 2004

- Özel İzmir Hastanesi Öneri Proje
- Kahramanlar Tıp Merkezi Öneri Proje
- Yenişehir İş Merkezi Öneri Proje
- Söke Pazaryeri Düzenlemesi ve Üst Örtüsü
- Söke Bedesten Çarşısı ve Otoparkı

## 2003

- Sığacık Plaj Düzenlemesi Öneri Proje
- Seferihisar Belediye Hizmet Binası ve Alışveriş Merkezi Öneri Proje
- Seferihisar Belediye Düğün Salonu ve Park Düzenlemesi Öneri Proje
- Sığacık Otel Öneri Proje
- İzmir Konak Belediyesi Yeşilyurt Spor Kompleksi Mimari Proje Yarışması

## 2002

- Sığacık Kalesi Çevre Düzenlemesi
- Özel Ege Tüp Bebek Merkezi ve Kadın Doğum Hastanesi Öneri Proje
- DEÜ Mimarlık Fakültesi Binası Sınırlı Katılımlı Mimari Proje Yarışması

## 2001

- İzmir Liman Arkası Kentsel Tasarım Uluslar arası Fikir Projesi Yarışması Projesi
- İzmir Uluslararası Fuarı Tarih Standı
- DEÜ Tıp Fakültesi Röntgen Birimi İç Mekan Düzenlemesi
- FÇ Evi İç Mekan Düzenlemesi
- HK Evi Öneri Proje

## 2000

- TESKOMB Merkez Birliği Binası, Ankara Mimari Proje Yarışması
- İLTEK Dershaneleri İç Mekan Düzenlemesi
- Denizli Özel İdare Kalp Damar Cerrahi Hastanesi Öneri Proje
- İzmir Erasmus Ruh Sağlığı Atölyesi

## 1999

- İzmir Veli Lök Ortopedi Kliniği
- İzmir Özel Ege Tüp Bebek Merkezi

## 1998

- Altınova Evleri
- Özel Salihli Can Hastanesi
- İzmir Adnan Menderes Havalimanı Yeni Dış Hatlar Terminal Binası ve Katlı Otopark Yarışması

## 1997

- Değirmen Evleri Öneri Proje
- ŞŞ Evi Öneri Proje
- Cashmere Bar

## 1996

- MÇ Evi
- EC Evi Öneri Proje
- Altınvadi Evleri
- Atakalp Hastanesi

**1995**

- EMOT Hastanesi
- Egeliler Kooperatif
- Ü Evleri
- AL Evi
- EKOTEN Tekstil Boya Fabrikası
- Tarih Genel Müdürlük Hizmet Binası Mimari Proje Yarışması
- Ankara 400 yataklı Trafik Hastanesi Mimari Proje Yarışması
- 500 Yataklı Tıp Devlet Hastanesi Mimari Proje Yarışması
- 400 Yataklı Tıp Devlet Hastanesi Mimari Proje Yarışması

**1994**

- OA Apartmanı
- Piri Reis Vakfı Akvaryum Öneri Proje
- Karşıyaka Belediyesi Zübeyde Hanım Kültür Merkezi Mimari Proje Yarışması
- Marmaris (Höyüktepe) Kültür Merkezi Mimari Proje Yarışması

**1993**

- Mert Konut Kooperatifi
- Anıtköy Kooperatifi
- Manav Ayakkabı Fabrikası
- Aşkabat, Türkmenistan - Piri Reis Vakfı İş Merkezi Öneri Proje
- Atlas Oteli İç Mekan Düzenlemesi Öneri Proje
- Aydın Belediye Otogarı Öneri Proje
- Dokuz Eylül Üniversitesi Torbalı Meslek Yüksekokulu
- Seferihisar-Teos Pansiyon İç Mekan Düzenlemesi

**1992**

- AL Apartmanı
- Dizayn Mobilya Mağazası
- İzmir Sanayi Odası Polinas Sürekli Tanıtım Standı
- İzmir Uluslararası Fuarı Eva Pavyonu
- Bianchi Stand Düzenlemeleri
- Bursa Hükümet Konağı Mimari Proje Yarışması

**1991**

- Çandarlı Yapı Kooperatifi
- İzmir Uluslararası Fuarı Bisan Pavyonu
- İzmir Sanayi Odası Polinas Sürekli Tanıtım Standı

**1990**

- Çeşme'de Ev

**1989**

- Didim'de Ev
- MK Apartmanı
- İY Apartmanı
- EXPO 92 Türk Pavyonu Mimari Proje Yarışması
- Kuşadası Belediyesi Ticaret Merkezi Mimari Proje Yarışması

**1988**

- HA Evi
- Maslak İstanbul 600 Yataklı Askeri Hastane Mimari Proje Yarışması

**1987**

- Güzel Ege Konut Kooperatifi
- Balçova'da Apartman
- SG Evi



# PROJECTS





Özel  
İAOSB Nedim Uysal  
Mesleki ve Teknik Anadolu Lisesi

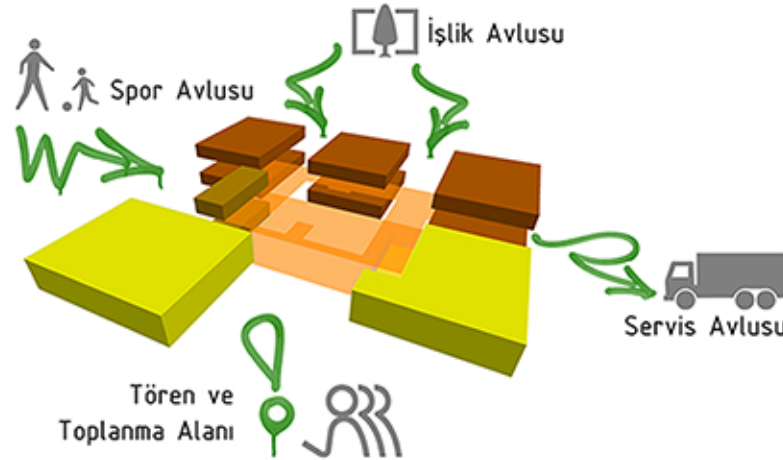


# IAOIZ NU Professional and Technical Private High School

\*

## 1. Prize

Client : IAOIZ Management  
Location : Çiğli - İZMİR  
Project Date : 2012  
Construction Date : 2014-2016  
Site Area : 13.770 m<sup>2</sup>  
Construction Area : 13.270 m<sup>2</sup>  
Photographer : ZM YASA



In the plan, building mass is organized as a series of spaces warpping a large gallery which enables interaction and continious visual perception, constructs dynamic and rich interior experience. Spaces lined on the corridor around gallery, merged to it by large gaps on the wall or by niches loaded with various programs. Niches with different properties between different blocks , enables interaction of exterior space with dynamic interior spaces. They have different identities due to different programs such as ceremony areas, entrance plazas, recess and sports areas. Divided blocks that are merged with courtyards function as a base for the mass containing educational spaces while creating a terrace. This terrace is connected to entrance plaza. It considered as a prestigious area which can be used as ceremony space, school activities are outspreaded.









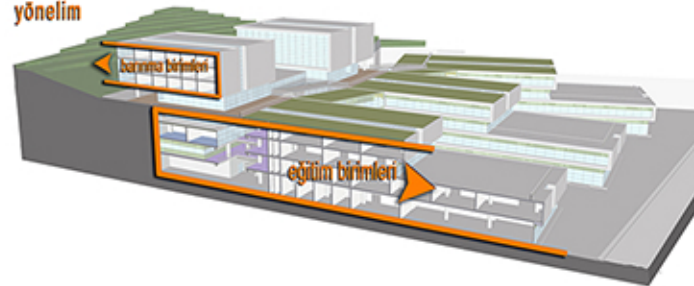
# AEU Professional and Technical High School



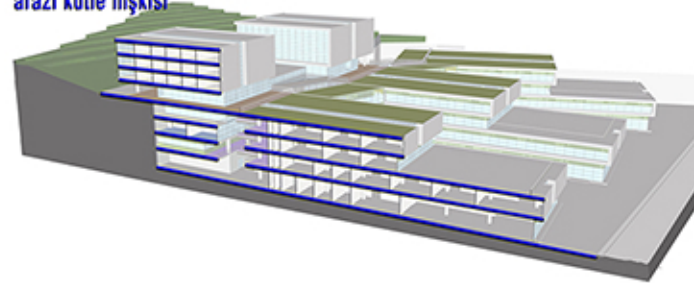
## 1. Prize

Client : UEU Automotive I.E.U  
Location : Nilüfer - BURSA  
Project Date : 2008-2009  
Construction Date : 2009-2010  
Site Area : 22.000 m<sup>2</sup>  
Construction Area : 30.728 m<sup>2</sup>  
Photographer : Cemal Emden

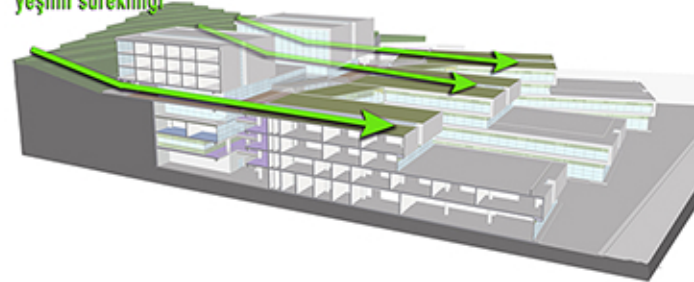
### yönelim



### arazi kütle ilişkisi



### yeşilin sürekliliği



With the idea to create an indoor environment with voids to support the interaction among students, the building form is organized with flexible and permeable galleries and courtyards that are successively placed to connect the educational units with social and cultural facilities. The spatial organization of the project gives the building mass its fragmented form placed in different elevations. The idea to cover terraces of education units with vegetation in harmony with the land slope has not only provided for continuity of the green, but also helped in placement of accommodation facilities (dormitory and lodging) separately from social and cultural facilities, at a location facing this green pattern created by the olive grove. The education building could therefore meet the idea of differentiating between the daily and private life of its users.







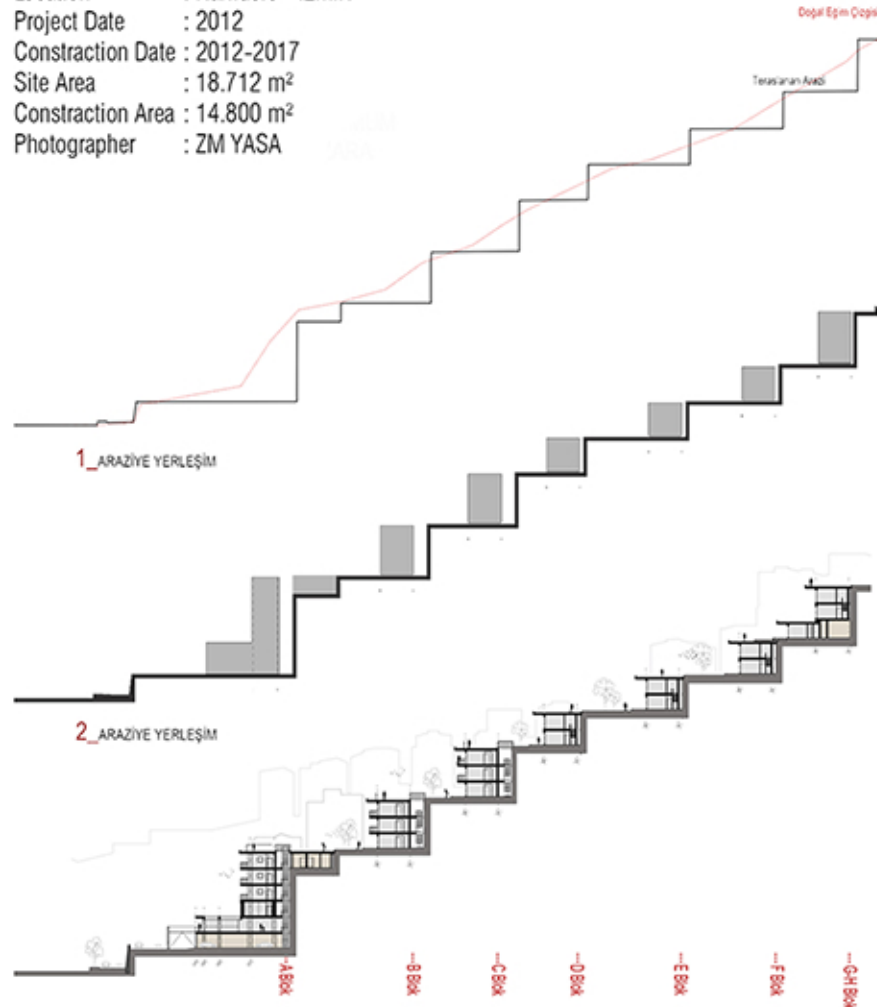


# Asma Bahçeler



The International Contextual Architecture Award In Memory Of Architect  
Turgut Cansever 2019, Jury Mention

Client : Tanyer İnşaat  
Location : Narlıdere - İZMİR  
Project Date : 2012  
Construction Date : 2012-2017  
Site Area : 18.712 m<sup>2</sup>  
Construction Area : 14.800 m<sup>2</sup>  
Photographer : ZM YASA



One of the major difficulties of the project that has forrest and Gulf of Izmir vista forms the main ideas of the project which is its steep topography. Asma Bahçeler is a mass housing project consisting of 92 residential units in which the major design objective is to provide users with the comfort of a private residence within a collective living environment. Buildings are positioned on a steep site with reference to the topography lines of the slope, thus minimizing interventions into the natural topography while creating residences with large gardens that merge with existing greenery. Aiming to establish an intimate neighborhood relationship, the residential units are lined up along a wide pedestrian walkway with a view of the bay, which extends along the curves of the topography. Each living space within the house is connected with the garden and vista. All interiors are integrated with exterior space. Materials such as brick, stone that have warmer tones are used for providing sense of "home" and for contrasting cooler tones in the context.



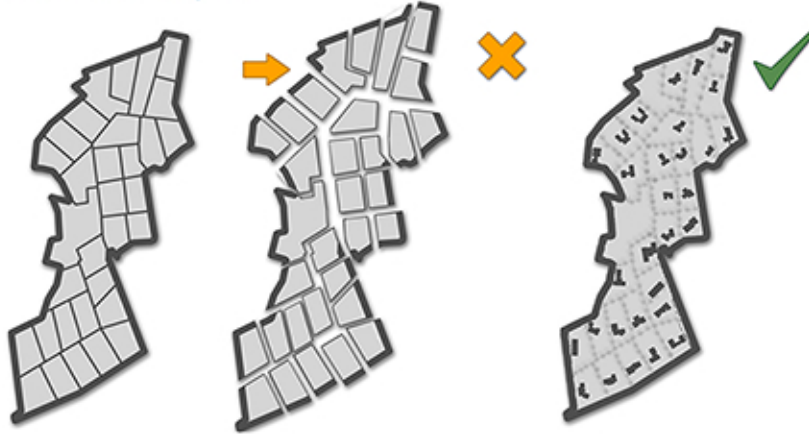




# Olive Park Housing

Client : TRE Investment  
Location : Urla - İZMİR  
Project Date : 2005  
Construction Date : 2005-2006  
Site Area : 75.000 m<sup>2</sup>  
Construction Area : 11.250 m<sup>2</sup>  
Photographer : Cemal Emden

## BİRİM BÜTÜN İLİŞKİSİ



ARAZİDEN ÇIKAN TAŞLAR



ELENEN TAŞLAR



KESME



KIRMA



Project is located on a 75000m<sup>2</sup> site that is surrounded by olive trees, pine trees. It consists of 30 houses, the unity in variety of the houses with differing plan layouts is achieved via different compositions of similar geometries, repetition of similar forms in building elements and use of similar coating materials in facades.

Sandstones that are taken from site excavation are used as cladding of exterior facades and applied on some interior surfaces. At some houses, sandstone were cut and mechanically assembled, at some houses they were formed by hand tools and applied by using mortar. Stone cladding reflects use of architectural language of traditional construction techniques.







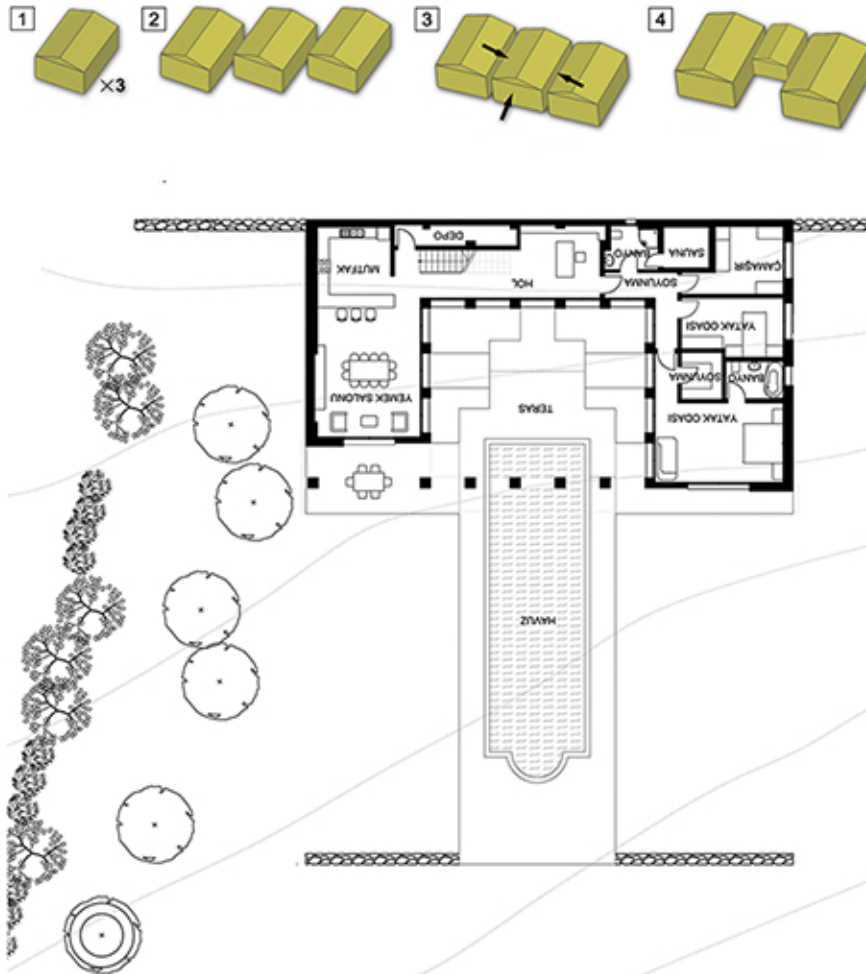


# Olive Park Housing - Queen House



National Architecture Awards 2008, Building Awards Nominee

Client : TRE Investment  
Location : Urla - İZMİR  
Project Date : 2005  
Construction Date : 2005-2006  
Site Area : 2.120 m<sup>2</sup>  
Construction Area : 360 m<sup>2</sup>  
Photographer : Cemal Emden



Placed at higher elevations of the sloped land, Queen House is oriented towards not only the entire estate, but also the sea scenery. The criteria of giving access to scenery from all spaces within the house has been the main determining component of the plan scheme. Building has a U shaped plan composed of rectangular prisms. It is designed as a 2-storey building and its entrance is placed at 1st floor. At ground floor, spaces are aimed to have a close relationship with the garden. A swimming pool is located at the courtyard, by this way qualities of that space are increased. The idea was to offer intimate relations between life in the garden and built spaces.



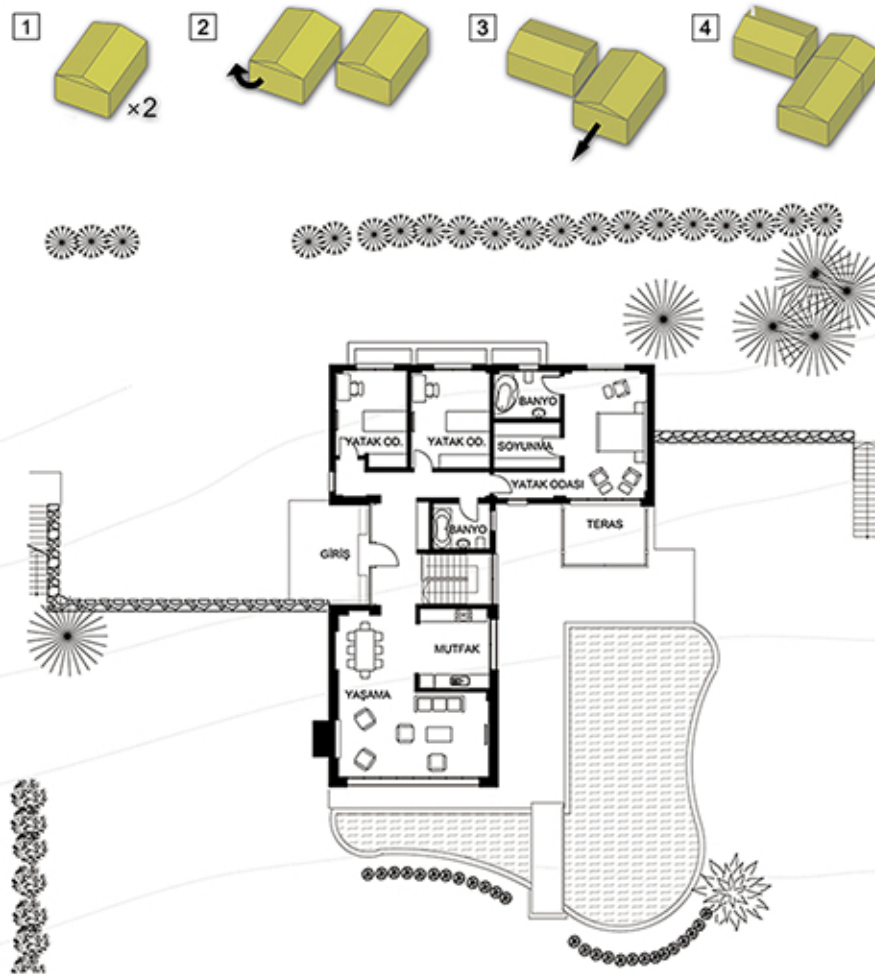






# Olive Park Housing - Mermaid House

Client : TRE Investment  
Location : Urla - İZMİR  
Project Date : 2005  
Construction Date : 2005-2006  
Site Area : 2.110 m<sup>2</sup>  
Construction Area : 350 m<sup>2</sup>  
Photographer : Cemal Emden



Placed at higher levels of the slope land, the two-storeyed house is designed in an L shaped plan scheme. The existing pine tree has been influential upon determining the plan scheme as well as its spatial layout. The living spaces and bedrooms in both levels not only circumscribe this natural entity, but also are oriented towards the sea scenery. At lower level terrace, and swimming pool is placed, by this way outdoor connection of interior spaces on that floor such as living room and bedroom is provided. There are large glazings at building facades and solid surfaces were clad with sandstones taken from the site.









# Vitalia Housing

Client : Uzunyayla Group  
Location : Narlıdere - İZMİR  
Project Date : 2013  
Construction Date : 2016-...  
Site Area : 29.858 m<sup>2</sup>  
Construction Area : 23.511 m<sup>2</sup>



The project site has 35 meters elevation difference. Site has panoramic view of Golf of Izmir. For this reason, all flats are aligned towards the sea scenery. Building mass is located on a base as a linear block in order to suit sloped topography. It is composed of 2 main building masses. The first part is located at lower level which contains, carpark, commercial areas, passage and swimming pool. At higher level, residence blocks are located. It is located with regards to elevation lines, by this way minimum intervention is made to existing topography. Residential block is terraced at upper floors. Some of those terraces are used as common use spaces and some of them become private terraces of flats.









# Thermal Valley Misya Timeshares

Client : Ali Çetinkaya  
Location : Susurluk - BALIKESİR  
Project Date : 2013  
Construction Date : 2014  
Site Area : 21.180 m<sup>2</sup>  
Construction Area : 6.354 m<sup>2</sup>



Thermal Valley Misya Timeshares is located on a sloped terrain with dense pine trees and changing topography. There is natural foliage of existing pine trees. The site has high potential due to existence of thermal water in terms of function and visual characteristics. Impressive foliage of the site formed design idea. Ideas of conserving natural foliage, avoid of permanent intervention on existing topography are embraced as design decision. The relationship between topography and building affected building tectonics and reflected its identity. Project programme consists of 90 flats, SPA center, social facility and 2 independent villas. They are designed as 2-storey buildings which have steel structure. Light weight partitions are used as walls and natural wood is used as cladding material.









# Akut Heart Vascular Hospital

Client : Ulusal Kalp Özel Sağlık Hiz. San. Tic. Ltd. Şti.  
Location : Gaziemir - İZMİR  
Project Date : 2007  
Construction Date : 2007-2011  
Site Area : 2.110 m<sup>2</sup>  
Construction Area : 4.180 m<sup>2</sup>  
Photographer : Cemal Emden

The project aims to provide simple and rational space organization. Furthermore in terms of aesthetics and spatial perception, it targets to produce an identity by transforming and reflecting notions of safety, hygiene, peace that healthcare facilities have, on spaces.

Four-storey building has a linear plan scheme. At ground floor, emergency services, polyclinics, cafeteria, information and registration services are located. At basement floor, surgery rooms, intensive care units, technical services are located. Patient rooms and doctor's offices are located at 1. and 2. floors.

Entrance hall is designed as vast void which both connects and separates, interior spaces such as patient rooms, diagnosis - treatment units, entrance to exterior spaces. Exterior cladding material is also used at this vast void for emphasizing its relationship with exterior.



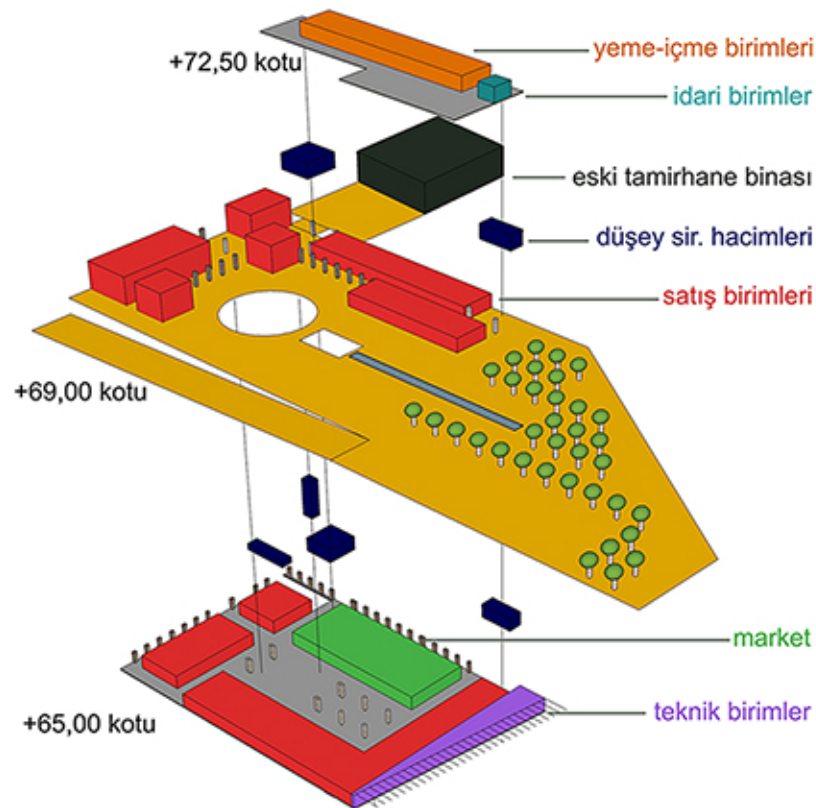






# Urla Town Square and Commercial Centre

Client : Urla Municipality  
Location : Urla - İZMİR  
Project Date : 2007-2009  
Construction Date : 2009-2011  
Site Area : 18.840 m<sup>2</sup>  
Construction Area : 30.760 m<sup>2</sup>  
Photographer : Cemal Emden



The building is located on a commercial plot island. It has 2-storey commerce center on top of 2 carparking floors that are located at basements. It connects transportation axis and existing urban fabric. Furthermore, building aims to define and reinforce the square that has shopping, leisure, socializing qualities. The square which is limited by the commerce center is diversified by an urban park with sycamore trees.

The design is harmonious with Urla's scale, and it is capable of responding spatial needs of modern life while reflecting aesthetic properties. It aims to present spaces in which commercial and sociocultural events occurred such as, plazas, streets, courtyards, arcades, terraces. Natural stone is selected as cladding material due to minimizing maintenance costs and being durable.



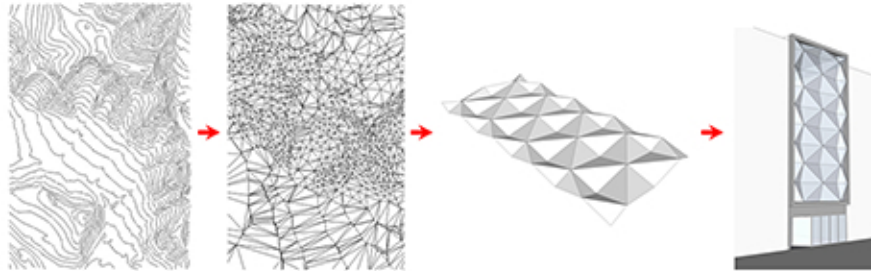






# İzmir Chamber of Geological Engineers

Client : CGE İzmir  
Location : Alsancak - İZMİR  
Project Date : 2013-2015  
Construction Date : 2016-2017  
Site Area : 17.840 m<sup>2</sup>  
Construction Area : 30.760 m<sup>2</sup>  
Photographer : ZM YASA



It is located on an attached parcel with a width of 6,65m. It has 5 storey. Office spaces are located at one edge of the building with a total area of 75m<sup>2</sup> for maximizing office space. The 5 storey building consists of a cafeteria, an entrance at ground and 4 office floors. North elevation is the only surface where the building can take natural light and interact with the street. For this reason, it is considered as a plane that reflects building's identity.

Fractal geometry of the facade is based on topography which reflects user's occupation. Geometrical facade surface provides different light refractions and create a dynamic effect for whole day.



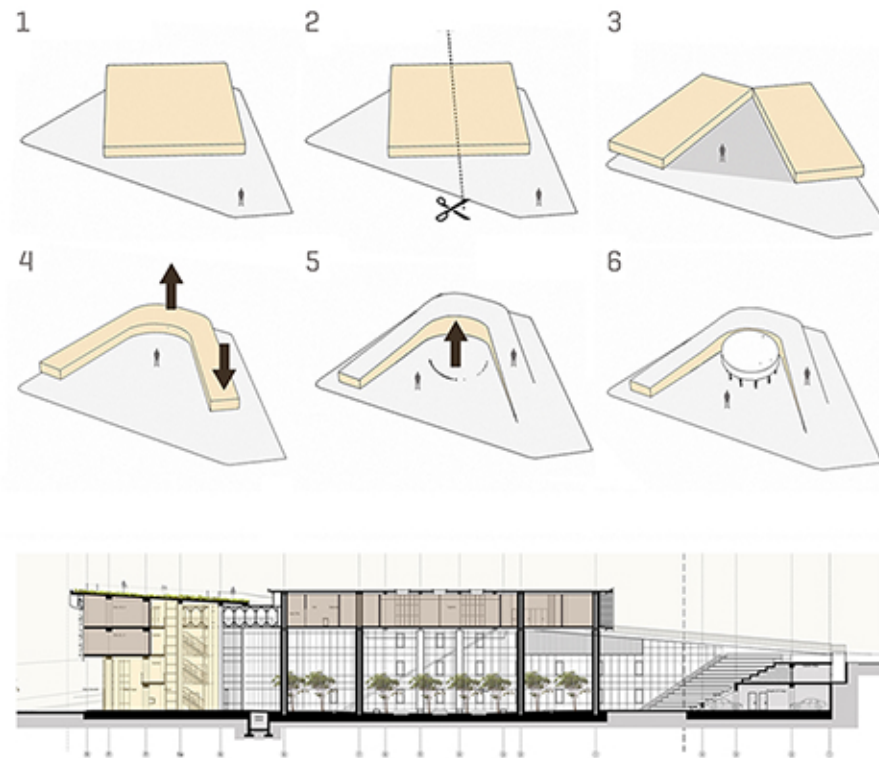






# İZTEKGEB Innovation Center

Client : İZTEKGEB  
Location : Urla - İZMİR  
Project Date : 2013  
Construction Date : 2013-2016  
Site Area : 9.989 m<sup>2</sup>  
Construction Area : 7.515 m<sup>2</sup>



Building's form and its identity was formed based on, topographical inputs, climatic data and data gathered from surveys done by users. An open space is created at upper elevation of the parcel and edges of the building follows edges of the parcel. It is aligned towards upper levels of the parcel and the roof is designed as a recreation area with a pedestrian route that provides panoramic vista of the site and sea.

R & D unit of the project is designed as an iconic form in order to emphasize its innovative and unique identity. Building program is distributed into 4 floors and has a simple plan formation. The atrium which is located at ground floor, connects exterior spaces and translucent interior corridors while providing opportunity of socializing.



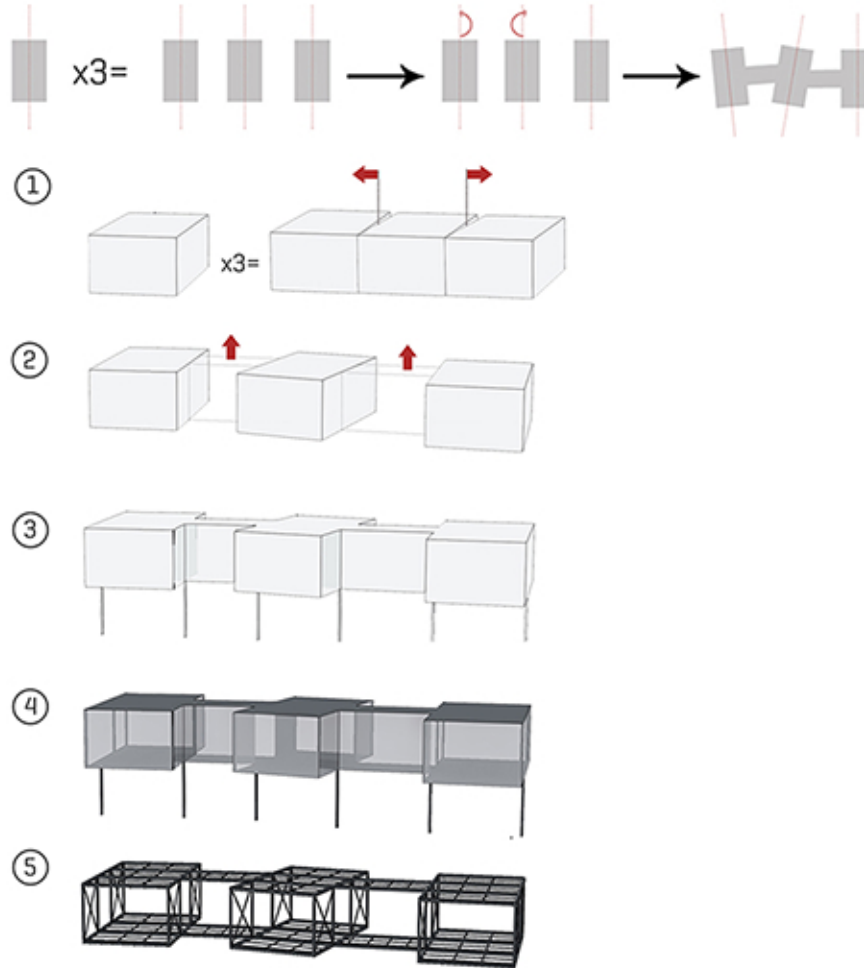






# Asma Bahçeler Sale Office

Client : Tanyer İnşaat  
Location : Narlıdere - İZMİR  
Project Date : 2012  
Construction Date : 2012  
Site Area : -  
Construction Area : 134 m<sup>2</sup>  
Photographer : ZM YASA



Project site has a slope of %50 and the project is designed as a demonstration office that showd contrast with existing context by this way it attracts attention. It is considered as a temporary structure, that gives minimum damage to existing topography. Principally it is placed tangential to the topography. Building is formed by 3 masses with different angles and different programs. It aligned towards vista of valley and sea. Timber sun shading elements provide various shades and it creates a dynamic interior space. Building makes users feel like being on top of the valley rather than being in an enclosed space with its glass walls.









# Homer Footbridge

Client : İzmir Metropolitan Municipality  
Location : Bayraklı - İZMİR  
Project Date : 2017-2018  
Construction Date : -  
Site Area : -  
Construction Area : -

In the content of the project, a footbridge which connects Salhane Izban Station and Bayraklı coastline together. The design consists of an iconic green bridge which passes through structural steel frames and ends with a statue. It is designed suitable for accesibility of disabled people, so ramps, elevators are added to the project. Durable materials such as epoxy painted steel structure, aluminium mesh railing, iroco floor covering are selected for the bridge and concrete is selected as the material of the statue. On the promenade, wave shaped concrete tiles are used for providing continuity.



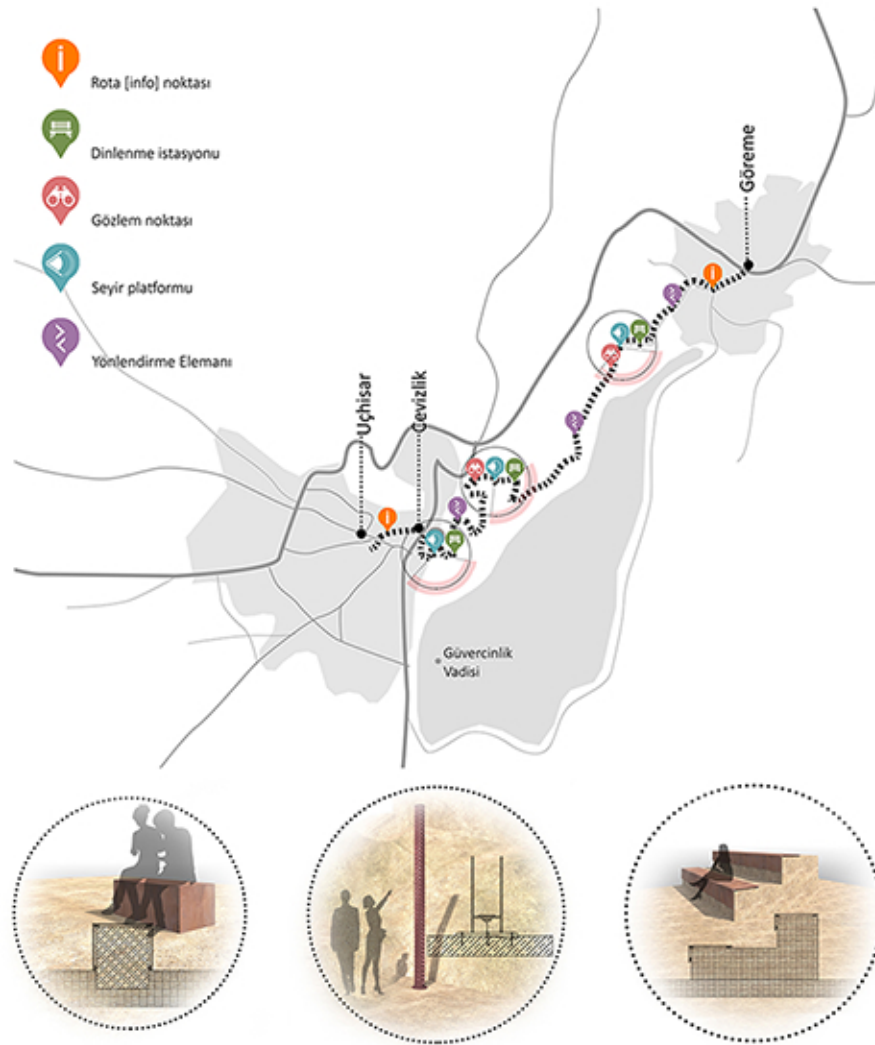




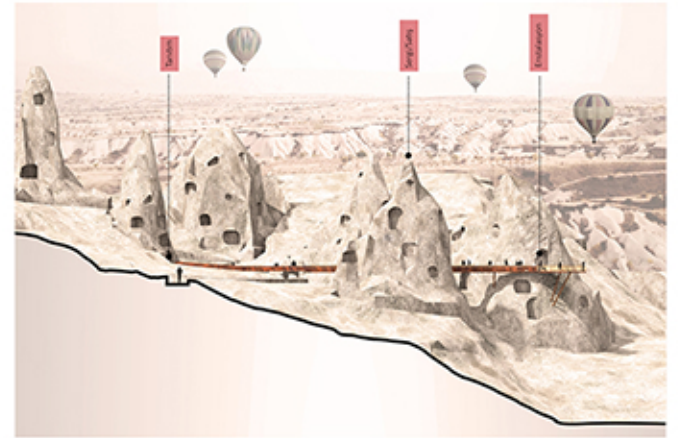


# Route Cappadocia Uçhisar-Göreme

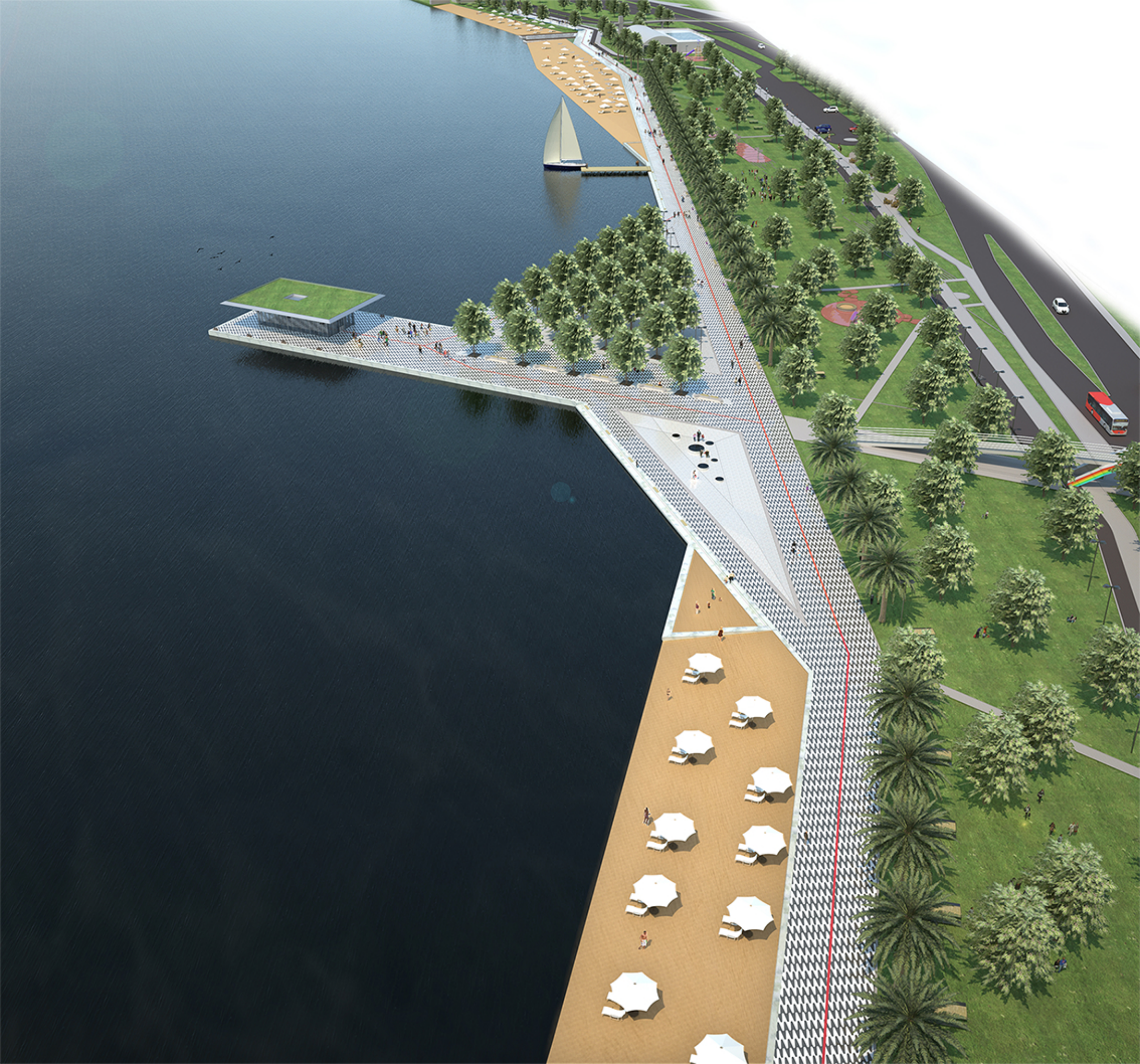
Client : Argos Cappadocia + Arkitera  
Location : Kapadokya - NEVŞEHİR  
Project Date : 2015  
Construction Date : 2015  
Site Area : -  
Construction Area : -



A place where it left off traces of magic by the time over geography, Cappadocia. Time causes transformation on this land and this transformation has brought a lot on it. The geography where it is exposed to changes and where it is eroded due to time. Erosion and changes transformed it to a magical geography persisting to time. Vista platform in Cevizlik, resting areas, lighting elements, observation elements are reflecting affects of time by the use of material perforated corten steel.









# İzmir Waterfront Design Turan-Alsancak Region

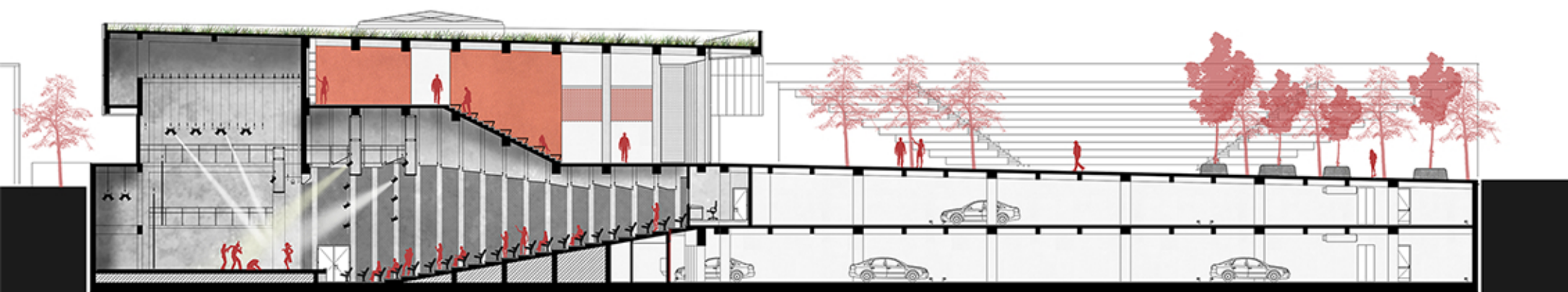
Client : İzmir Metropolitan Municipality  
Location : İZMİR  
Project Date : 2012  
Construction Date : 2016-...  
Site Area : -  
Construction Area : -



The character of the new coastline, will reach the quality of being “the location” while solving existing problems. General character of it is, being a location where people of İzmir can interact with the coast. New themes such as, islands, beach, ecopark, entertainment zones are introduced for providing identity to the district. Problems of physical obstacles created by Altinyol and Izban is solved by creating new corridors which are perpendicular to the coastline. Footbridges are considered as typological construction element that repeat in a defined distance while providing feeling of rhythm, provide connection between district and coastline with their transforming characteristics depending on their locations. Coast line is divided into 6 parts based on thresholds that intersects its use.



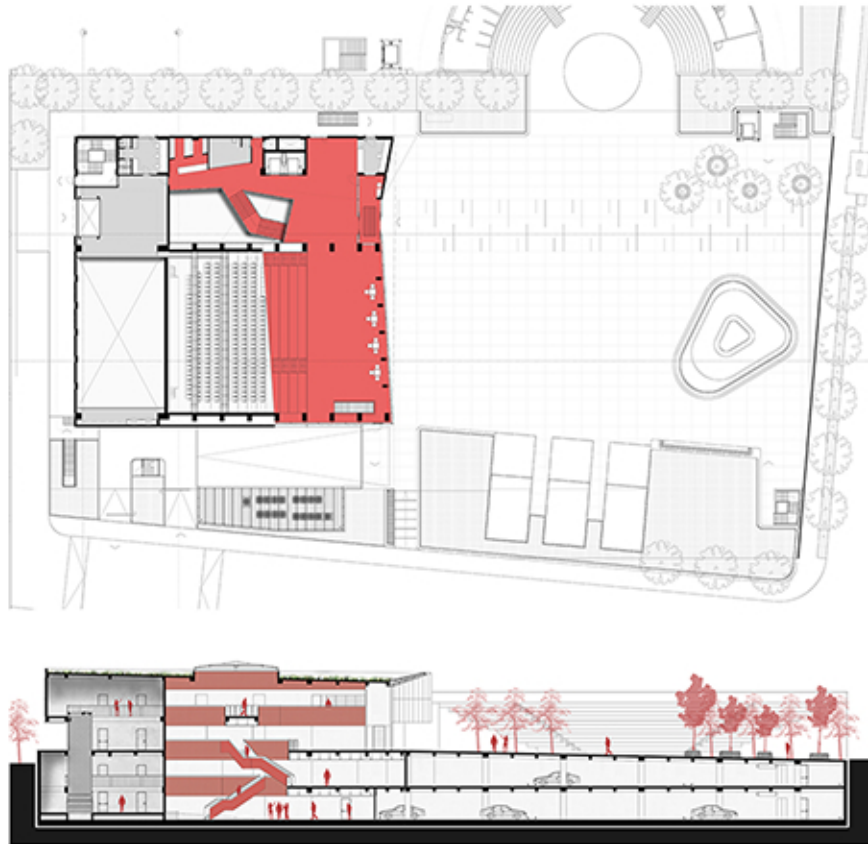




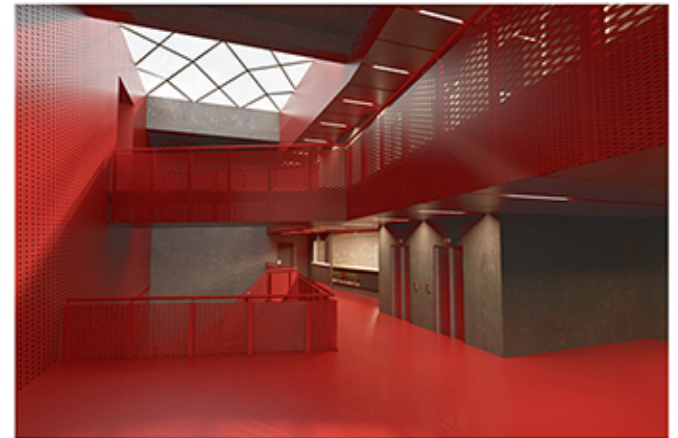


# Buca Performance Art Center

Client : Buca Municipality  
Location : Buca - İZMİR  
Project Date : 2017  
Construction Date : 2017-...  
Site Area : 4.889 m<sup>2</sup>  
Construction Area : 7.849 m<sup>2</sup>

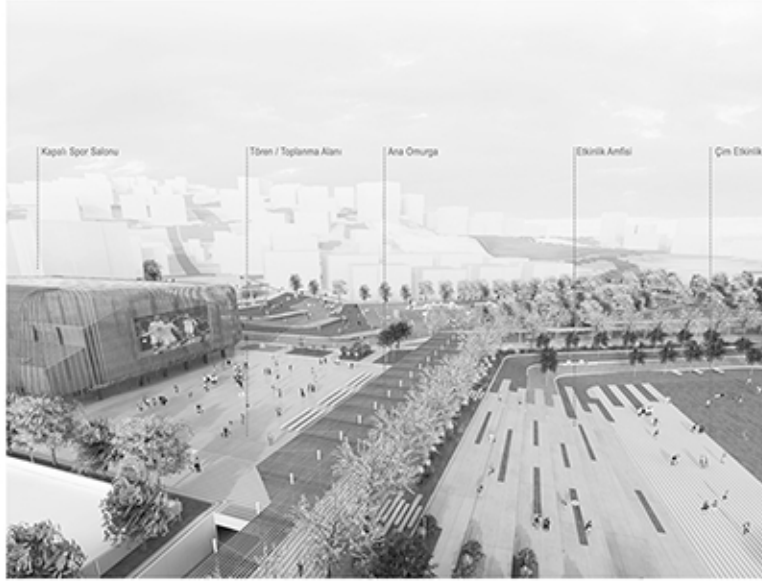


Stage Buca consists of 4 floors 2 basement floors, ground floor, 1. floor that has a theater hall with a capacity of 600 people. There is a bazaar which surrounds the site from 3 edges and it ends with an amphitheater. It aims to provide a public open space in dense urban fabric while enriching urban life, providing an interactive atmosphere and providing visual, spatial connection with the plaza. The facade facing with the plaza has a large glass surface for having an inviting attitude. Theater hall starts from 2 floors beyond from the plaza elevation and it has a library on top of it which will be used by all types of users in daily life.. Furthermore there are galleries that connects floors to each other for providing continuity. There is a carpark located below the plaza with a capacity of 63 vehicles.

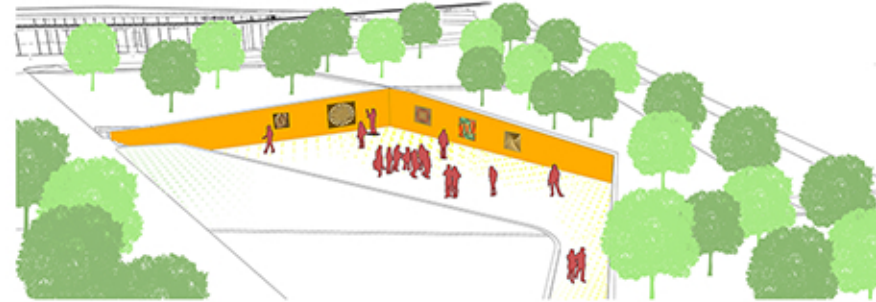
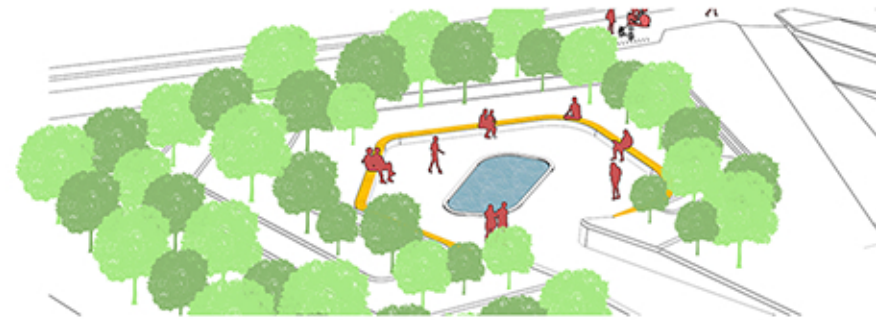
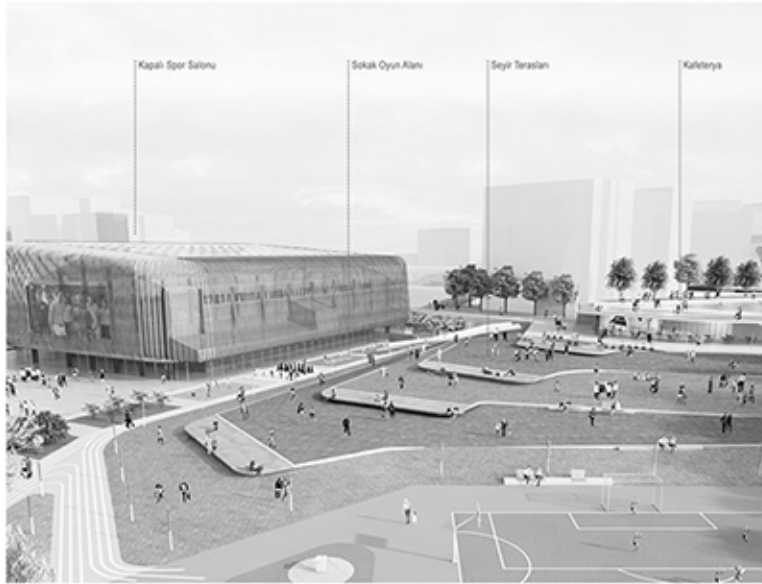




# İzmir Karabağlar Municipality Urban Open Space and City Square Design Competition



Client : Karabağlar Municipality  
Location : Karabağlar - İZMİR  
Project Date : 2017  
Construction Date : -  
Site Area : -  
Construction Area : 41.910 m<sup>2</sup>

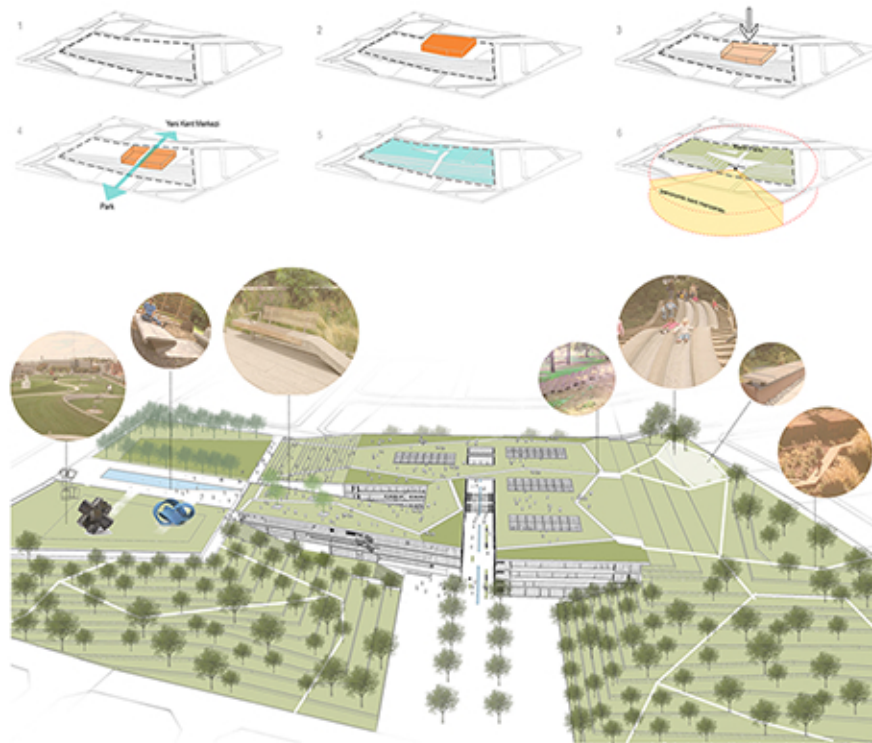


Characteristics of the site, form main design approaches. Sports zones are located at the northwest of the site, due to its high-sloped topography. Large flat area and cavities at the southwest of the site, are functioned as gathering areas for public and cultural events due to their static characteristic. The pedestrian axis is considered as the main spine which connects and provides transivity between 2 parts with different characteristics. Transivity becomes, continuous and fluid by modifications on topography. Furthermore, there is transivity between programmatic zones. Niches are created through the design, which has different characteristics, functions. As a result, public and private use for users is provided.



# Balıkesir Metropolitan Municipality Service Building Architectural Project Competition

Client : Balıkesir Metropolitan Municipality  
Location : Merkez - BALIKESİR  
Project Date : 2016  
Construction Date : -  
Site Area : 35.590 m<sup>2</sup>  
Construction Area : 39.836 m<sup>2</sup>



The project is designed as an urban park for the new city center located on a flat terrain on a sloping hill. For this reason, building is embedded into topography. A pedestrian axis form south to north, passes through the building and ends with an observation deck. Main entrance and personnel entrance is located on it. The pedestrian axis is connected to green urban square on west direction with an amphitheater. There are entrances of different cultural units such as library and conference hall. The building is designed as a building block located on a linear axis with courtyards. Those courtyards , provides interior-exterior connection and becomes niches which offer different programs. They can be public or private open spaces and sometimes they can transform to galleries.

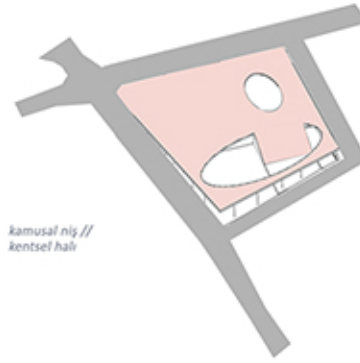




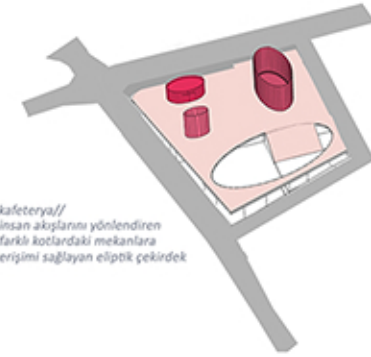


## Caferağa Sport and Cultural Center Architectural Project Competition

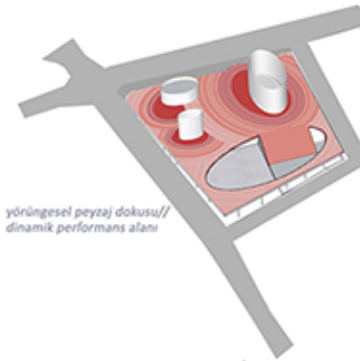
Client : Kadıköy Municipality  
 Location : Kadıköy - İSTANBUL  
 Project Date : 2016  
 Construction Date : -  
 Site Area : 2.121 m<sup>2</sup>  
 Construction Area : 10.310 m<sup>2</sup>



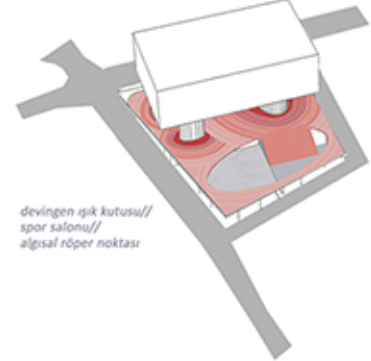
*kamusal niş //  
kentsel halı*



*kafeterya//  
insan akışlarını yönlendiren  
farklı kotlardaki mekanlara  
erişimi sağlayan eliptik çekirdek*



*yörüngesel peyzaj dokusu//  
dinamik performans alanı*



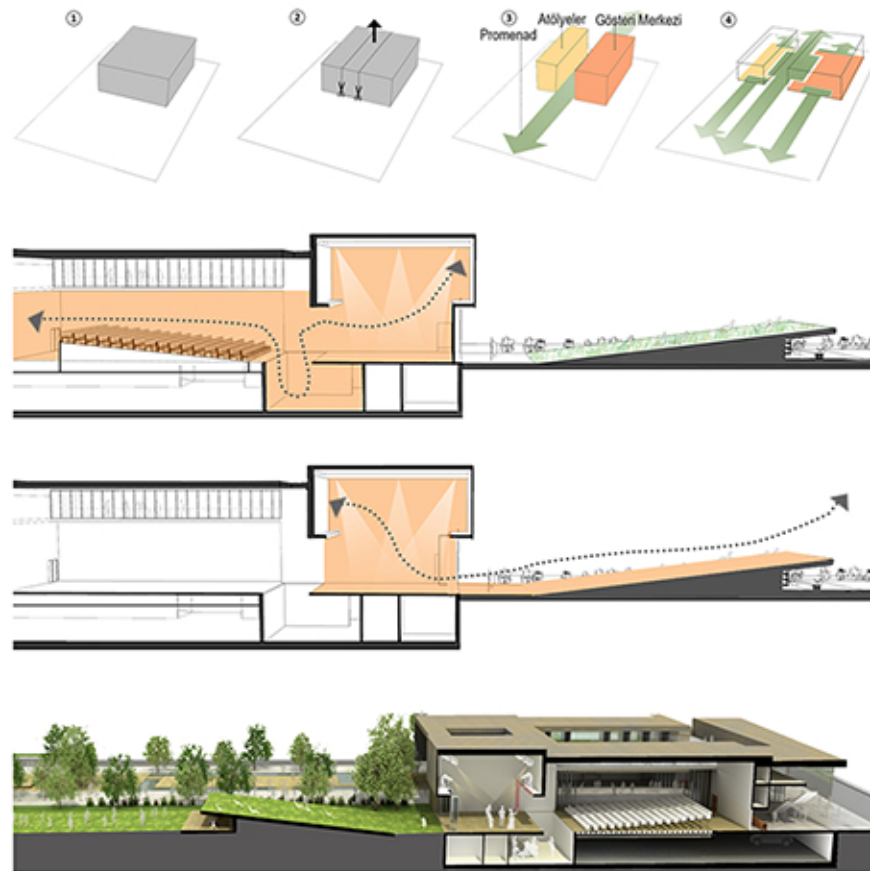
*devingen ışık kutusu//  
spor salonu//  
algısal röper noktası*

There are, 3 civility reinforcing strategies formed the design which are, "Urban Niches", "Urban Carpet", "Dynamic Light Box". "Urban Niches" can be considered as a canal on Sakız Street which enables pedestrian flow while creating a gathering space. As a result, it can be considered as a reference point that becomes an open space on urban fabric while enabling use of various user profiles, both at day and night time. "Urban Carpet" creates an urban platform which connects and reorganizes pedestrian flow. It contains urban furniture and becomes a meeting point. "Dynamic Light Box" is suspended on air, in order to make users perceive spatial void and sportive performative acts which are a part of urban memory.



# Antalya Muratpaşa Performance Center Architectural Project Competition

Client : Muratpaşa Municipality  
Location : Muratpaşa - ANTALYA  
Project Date : 2015  
Construction Date : -  
Site Area : 5.764 m<sup>2</sup>  
Construction Area : 7.243 m<sup>2</sup>

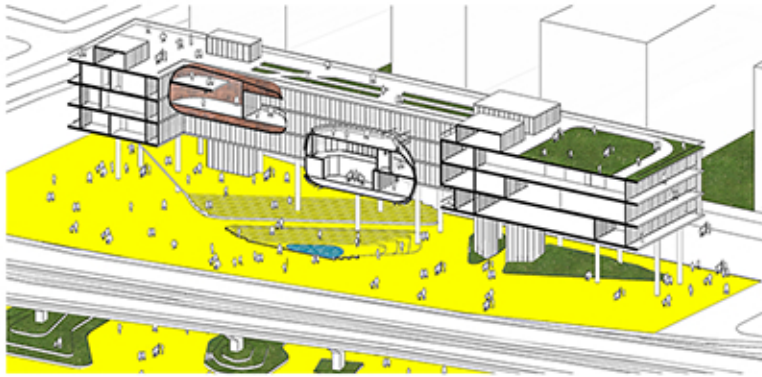


The Performance Center is designed as a "Open scene" while considering reality of watching and being watched in our daily life. Performance hall and public park is a place in which the life passes through and experience of performative actions are concentrated. The park is designed as a part of a "Green Network" in which fragments of green areas of existing residence pattern are connected. The building mass is separated into two parts by the promenade. Performance Hall and ateliers are located at both sides of it. The building mass has niches and considered as porous space.





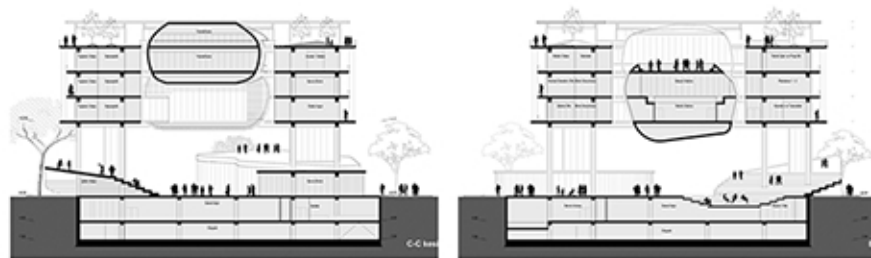
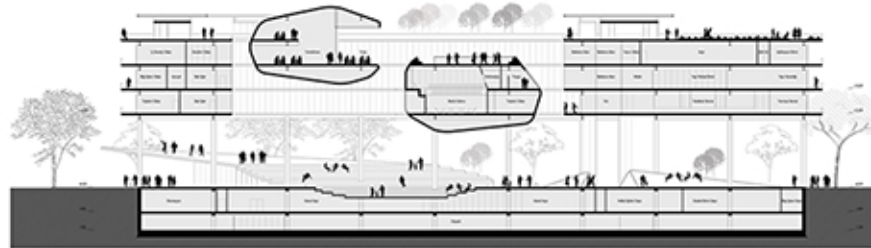
# Konak City Hall Architectural Project Competition



\*

## Honorable Mention

Client : Konak Municipality  
Location : Konak - İZMİR  
Project Date : 2015  
Construction Date : -  
Site Area : 7.982 m<sup>2</sup>  
Construction Area : 23.617 m<sup>2</sup>



Building programme is considered as a “public municipality plaza”. Services and technical spaces are located below the plaza and municipality service units are located in elevated building form. Ground floor which is designed as a “Public municipality plaza” enables urban permeability and enables unrestricted circulation. It contains, day-night public programs that increase inhabitability while hosting defined and uncalculated programs. Prestigious facades of the building that expresses modern monumentality are designed in terms of simplicity.

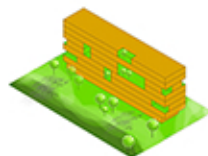
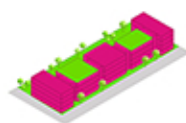


# İzmir Gaziemir Aktepe and Emrez District Urban Transformation Project Competition



## Honorable Mention

Client : İzmir Metropolitan Municipality  
Location : Gaziemir - İZMİR  
Project Date : 2015  
Construction Date : -  
Site Area : -  
Construction Area : -



In this project, the aim is that the current informal structure of the tissue, creating a flexible layout model. Therefore it was considered that diversity fact in the informal life. In the project site, cultural and spatial diversity, different density of using space, different level relation with ground, transivity of public, semi-public, semi-private and private spaces, togetherness of rural-urban use diversity of urban architectural fabric and uncertainty in boundary of use area as such some design criterias are created. Ridges and edges of the river will be used for public access as site planning strategy. Grid arrangement of conventional planning that homogenises every part of the site, is readapted because of topographical circumstances, variety in urban fabric and population density.





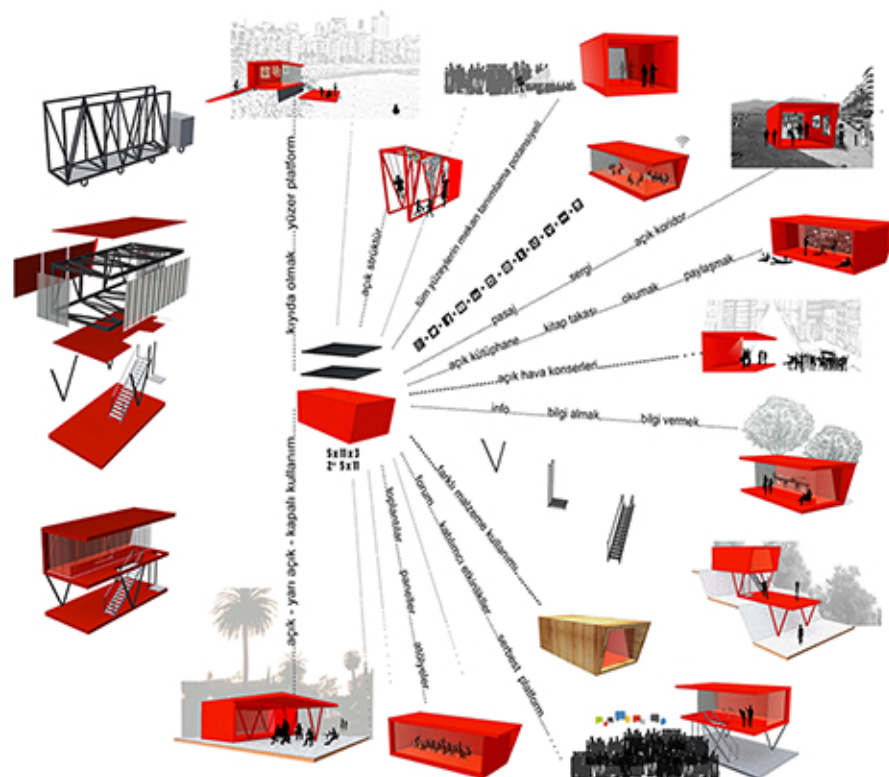


## İzmir Mediterranean Academy Concept Project Competition

**\***

Equivalent 1th Prize

Client : İzmir Mediterranean Academy  
Location : İZMİR  
Project Date : 2014  
Construction Date : -  
Site Area : -  
Construction Area : 55 m<sup>2</sup>

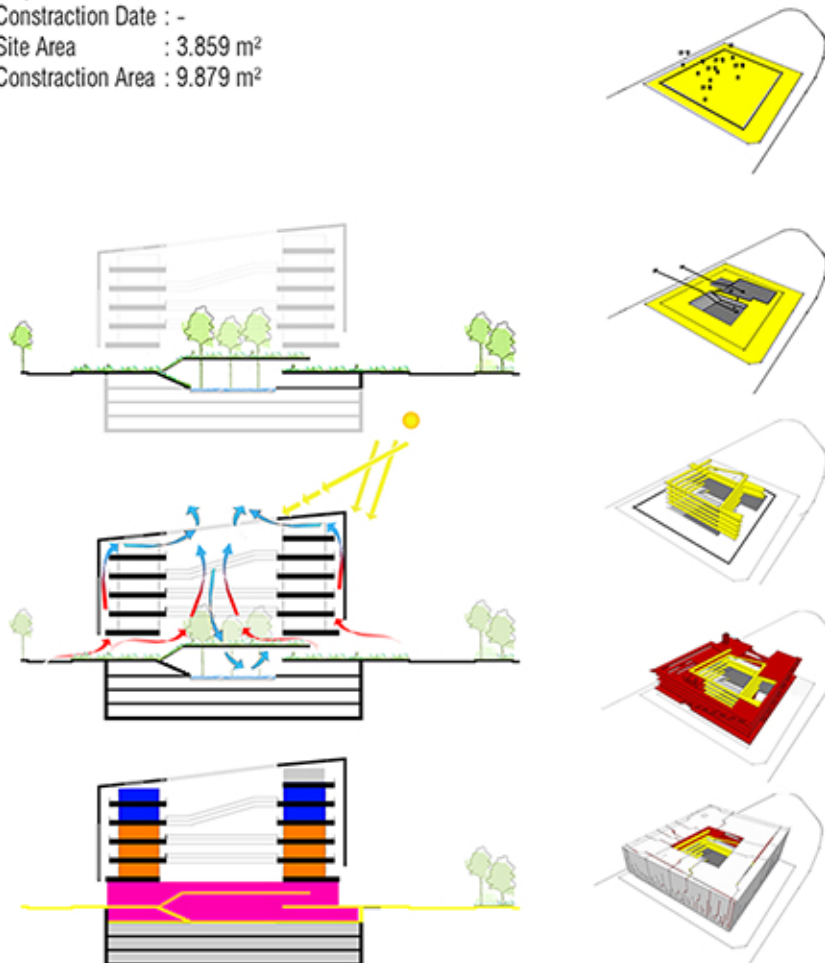


Gulf, geography, climate, social, cultural structure and high potential of Izmir provides various possibilities of use. 5X11x3m containers are designed to be flexible in order to respond demands and needs of location. It offers countless spaces to social life with its simple architectural language. It can be placed to every location of city. As a result, interaction of users and qualities of actions, unexpected variations can derive. It can be used as seminar – meeting space, exhibition area, information space, library and more. Several accessories such as, stairs, steel pilotis, platforms can be mounted to this container to provide coherency to context, multi – purpose, characteristics of it.



# ACC Building Architectural Project Competition

Client : Adana Chamber of Commerce  
Location : Merkez - ADANA  
Project Date : 2014  
Construction Date : -  
Site Area : 3.859 m<sup>2</sup>  
Construction Area : 9.879 m<sup>2</sup>



Introverted planning is preferred in this project due to low-quality buildings in the context. The courtyard at the center of the building creates a public void. Brick material that is used at outer layer provides a solid appearance and glass facade at inner layer provides a transparent appearance. Ground floor is designed as a landscape where uninterrupted encountering happens. Monolithic building mass, which is suspended on a transparent and permeable groundfloor, triggers curiosity and increases tension. Transparency represents characteristic of being open to public access and transparency decreases at upper floors in order to reflect programatic setup.

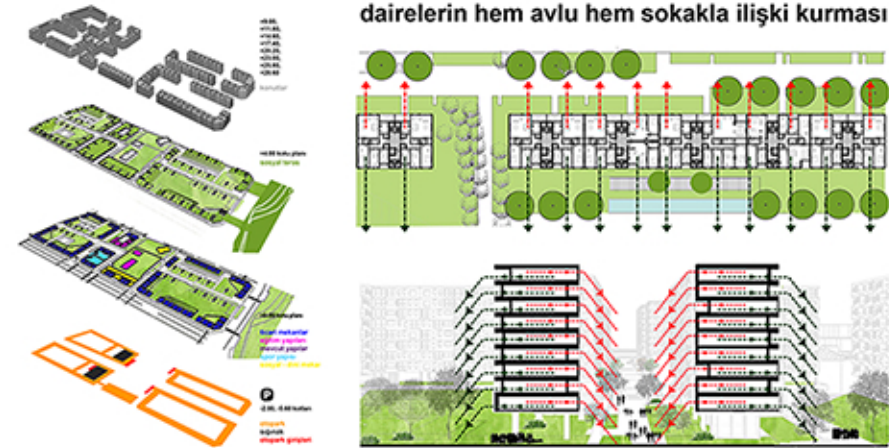






# Çanakkale Social Housing District Urban Renovation Project Competition

Client : Çanakkale Municipality  
 Location : Merkez - ÇANAKKALE  
 Project Date : 2014  
 Construction Date : -  
 Site Area : 83.440 m<sup>2</sup>  
 Construction Area : 236.464 m<sup>2</sup>

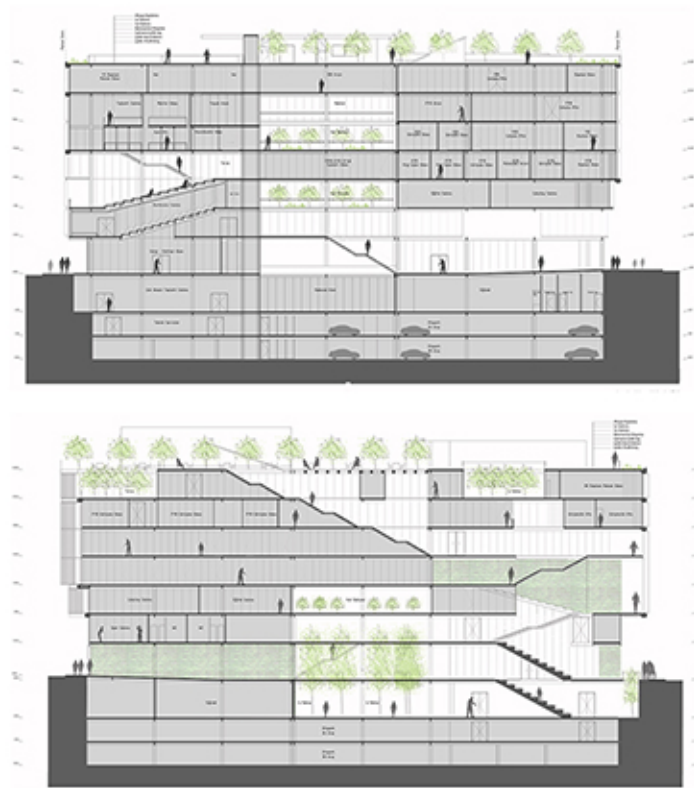


Urban blocks are proposed for this project. Introverted courtyards are obtained by locating urban blocks on borders. Basement floor, 1st floor are opened for public use and residence are located on upper floors. In proposal project, residences both have vista of courtyards and boulevard. Fragmented existing green areas through the coast and Sarıçay transformed into a continuous recreation area by penetration of green areas to 1. floor and roofs. Building blocks are located at edges of the site. As a result, green areas are maximized. Social courtyards and streets are created on those green areas, by this way, they are opened to the city as a public level.

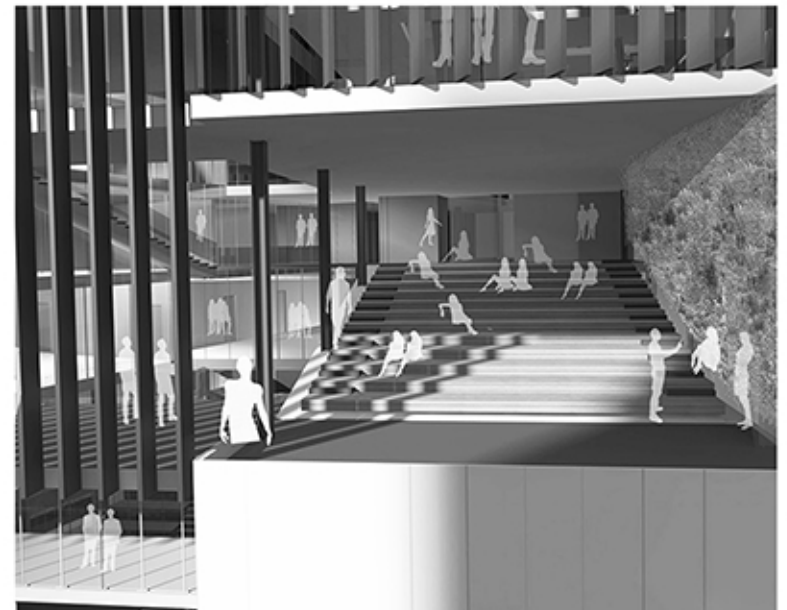


# İZKA Service Building Project Competition

Client : İzmir Development Agency  
Location : Konak - İZMİR  
Project Date : 2013  
Construction Date : -  
Site Area : 1.518 m<sup>2</sup>  
Construction Area : 9.219 m<sup>2</sup>

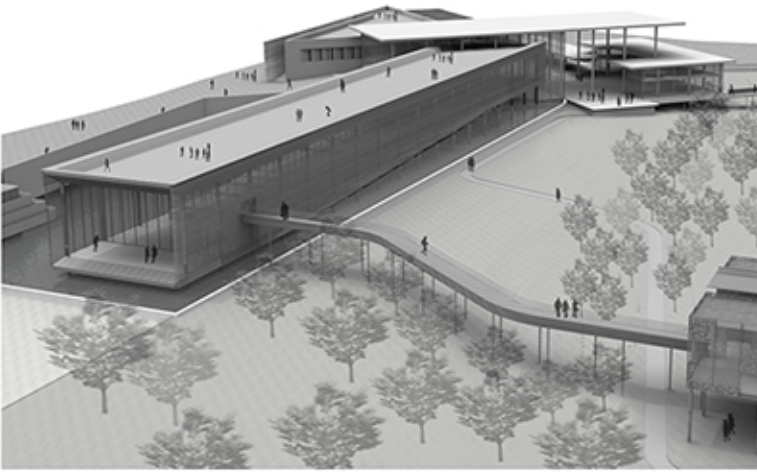


İZKA has an aim to be a new city creation center which is suitable for its missions. The site is located at business district. It aims to be a 24-hours alive space that works as a public void and functions as a public dynamo while maximizing public use. For this reason, project aims to bring a new office typology and a new public life experience to the district. Spatial permeability of the building is provided at all floors of the building, starting from the ground floor, which conveys people density to the inner parts of the district. Continuity of public access is provided by public void from ground floor to the roof. Continuity of green areas accompanying to "Vertical Publicity" is provided by Public Terrace, Exterior Amphitheater, Terrace Gardens and Floor Gardens.

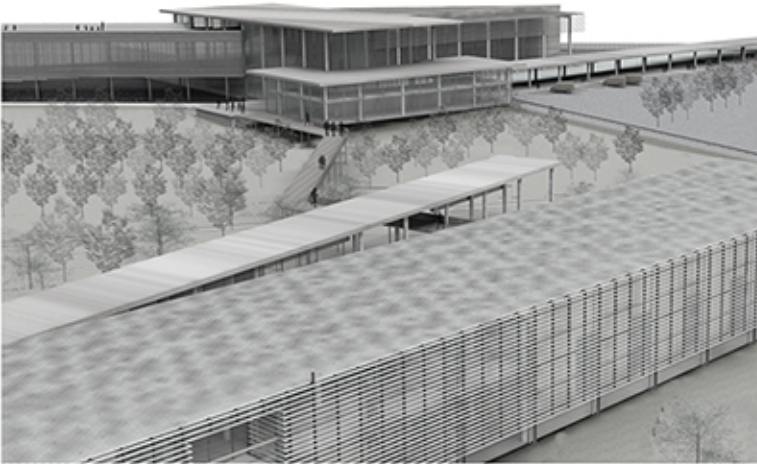




# Troy Museum



Client : Ministry of Culture and Tourism  
Location : ÇANAKKALE  
Project Date : 2011  
Construction Date : -  
Site Area : 104.000 m<sup>2</sup>  
Construction Area : 11.000 m<sup>2</sup>



## SİRKÜLASYON ŞEMASI



ZİYARETÇİ KISA DOLAŞIM HATTI



ZİYARETÇİ UZUN DOLAŞIM HATTI

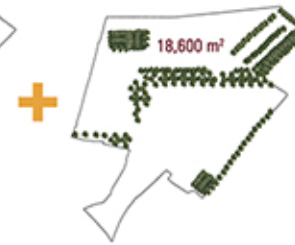


ZİYARETÇİ SERBEST (BİLETSİZ) DOLAŞIM HATTI

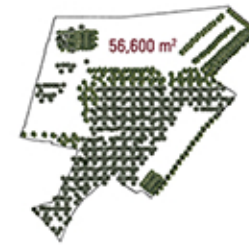
## YEŞİL DOKU ŞEMASI



MEVCUT YEŞİL DOKU



ÖNERİ YEŞİL DOKU



TOPLAM YEŞİL DOKU

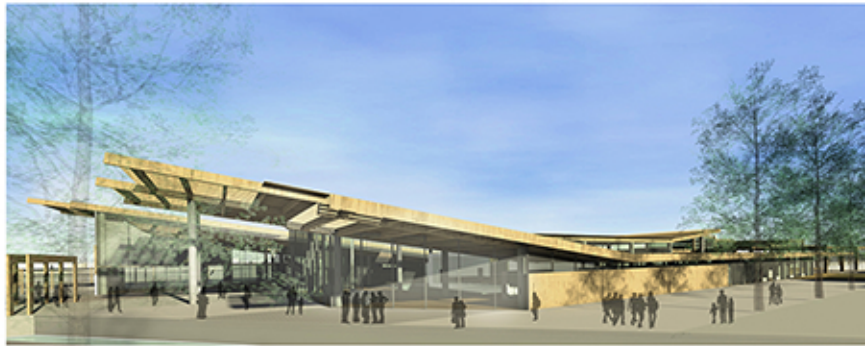


With intention to project existing green pattern in project site, design approach adopts a fragmented functional layout where local urban pattern is resembled in placement of block in harmony with topography, circumscribing green areas and roads. Building masses are transparent to provide visual relationship between interior and exterior spaces. Project aims to make users travel the "project site" that has 5000 years history, by increasing perception of historical layers and enriching perspectives. "The site" is exhibited by a bridge-path in horizontal and by a tower in horizontal. The design aims to enable users to travel Archeological site of Troy and Tevfikiye Village by passing between streets and green areas.

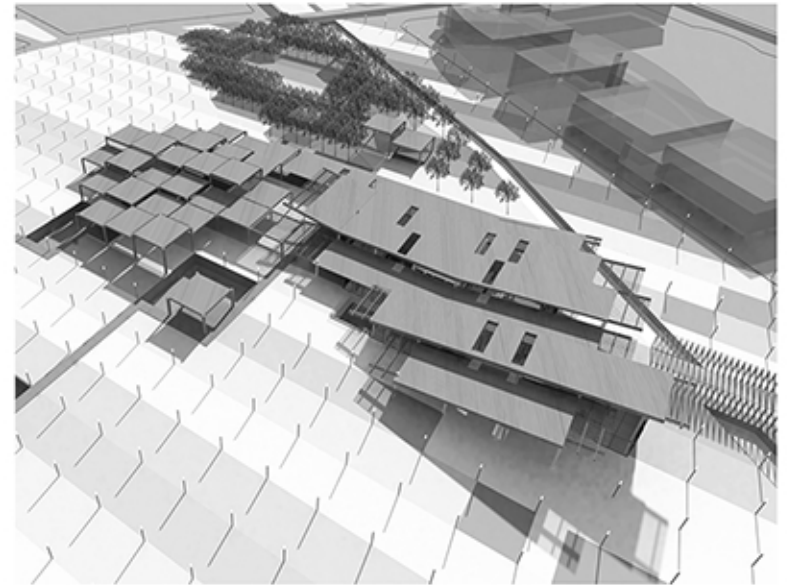


# Yeşilova Mound Visitor Center

Client : Bornova Municipality  
Location : Bornova - İZMİR  
Project Date : 2016  
Construction Date : -  
Site Area : 13.000 m<sup>2</sup>  
Construction Area : 3.570 m<sup>2</sup>



The design approach involves giving spatial and perceptual integrity to three different parts of the site. The project layout reflects the idea to spatially sustain the excavation site in the form of a vast archaeological dig. In this respect, the grid scheme of the excavation method adopted in excavation site constitutes the main spatial pattern of the project. The building aims to provide notion of conveying past to future by setting up temporary structure. For this reason, building mass designed as a protective roof. A transparent building mass which is not spreading to the whole site, is designed for providing visual connection with archeological dig.







# Denizli Government Office Urban Design



## Purchase Award

Client : Denizli Provincial Administration  
 Location : DENİZLİ  
 Project Date : 2009  
 Construction Date : -  
 Site Area : 53.000 m<sup>2</sup>  
 Construction Area : 12.400 m<sup>2</sup>



Refunctioning of existing eligible buildings which are reflecting characteristic of construction notion and identity of republic period is aimed. Decision of protecting them by refunctioning, helps protecting urban memory and provide continuity of urban space. Design for the project site is based on 3 main phases which are "Green Line, Green Heart, Ecoroad".

Green Line: It is considered as a uniting connection of "Green Heart" at the city center and important ecosystems.

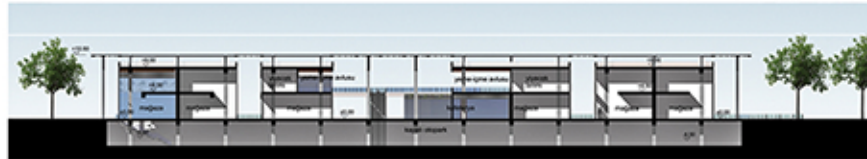
Green Heart: It symbolizes retransformation of the city center based on ecological principles.

Ecoroad: It is a route which organizes open space system.

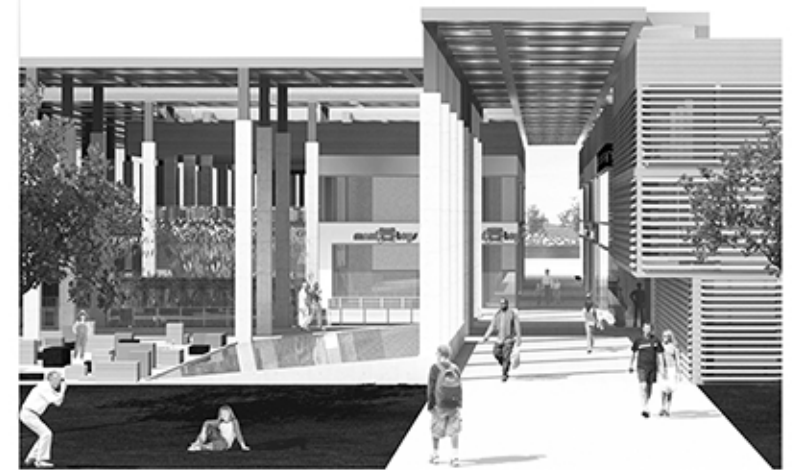


# Fethiye Municipality Shopping Mall

Client : Fethiye Municipality  
Location : Fethiye - MUĞLA  
Project Date : 2016  
Construction Date : -  
Site Area : 22.820 m<sup>2</sup>  
Construction Area : 32.540 m<sup>2</sup>



In its spatial language, architectural design of the center aims to reflect the contemporary identity with its choice of materials, control over adverse impacts of climatic conditions, harmony between the urban pattern and scale of Fethiye and elaborate consideration of locality - specific data. Fethiye, has a climate which has lots of hot and sunny days. As a result, habit of exterior use is high. For this reason, a canopy which covers top of pedestrian circulation areas, in other words streets are designed for solar control, that enables air and light to permeate. It strengthens defined spaces, decrease energy consumption, maintenance fees and minimizes ecosystem damages.









PUBLICATIONS





Bezirhane'de Birikenler;  
Tasarımcıların Gözünden Kapadokya



Turgut Cansever Uluslararası  
Mimarlık Ödülleri 2019



Architecture Material1 - Brick&Tile  
Haziran 2019



Arredamento Mimarlık  
Haziran 2019



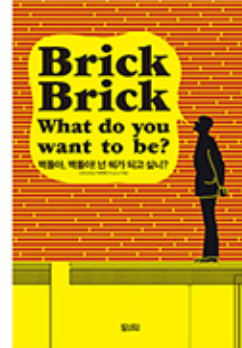
Tasarım Dergisi  
Mayıs 2019



Serbest Mimar  
Mart 2019



İzmir SMD 2003/2018 İzmir  
Merkezli Çağdaş Mimarlık Pratikleri



Damdi - Brick, Brick What Do  
You Want to Be



A&C Architecture and Culture  
Ekim 2018



Yapı  
Eylül 2018



Betonart  
Temmuz 2018



Arredamento Mimarlık  
Temmuz-Ağustos 2018



Yapı  
Mayıs 2018



Serbest Mimar  
Temmuz 2018



Mini Building 7  
Neighborhood Facility

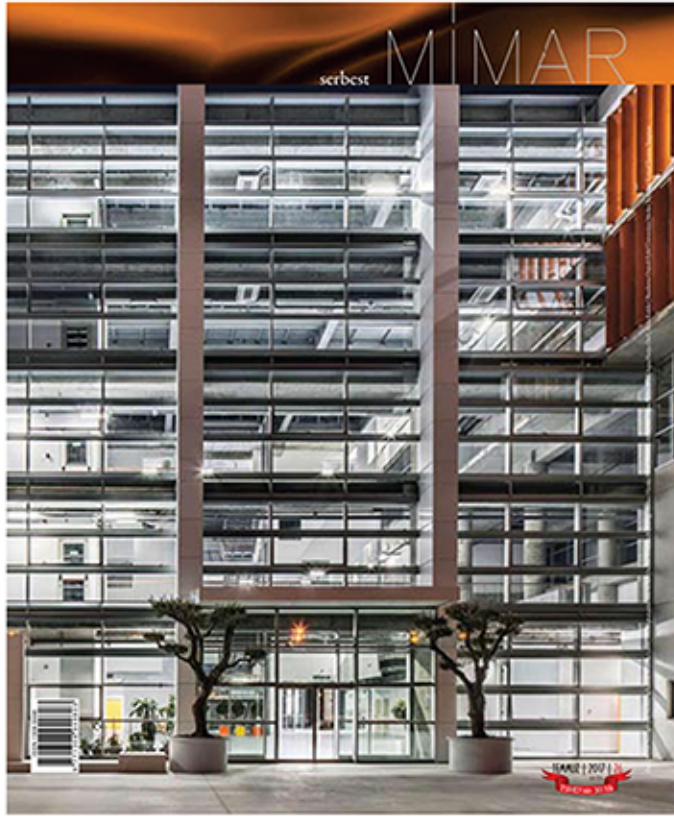


Konsept Projeler  
Mimarlar&Markaları VIII



Contemporary Turkish Architecture  
2017





Serbest Mimar  
Temmuz 2017



Damdi - Advanced Architecture  
4-5-6



Vitra İle Kentin Hayalleri



Eko Yapı  
Ocak 2017



Serbest Mimar  
Eylül 2016



Mimarlık Eğitiminde Pedagoji ve  
Pratik Arasında Var Olmak



Arkitera Ne Konuşuldu  
Aralık 2015



Serbest Mimar  
Aralık 2015



İstanbul Art News  
Kasım 2015



Vitra Çağdaş Mimarlık Dizisi  
'Konut Yapıları' - 2015



Betonart  
Nisan 2015



Ege Mimarlık  
Mart 2015



Yapı  
Mart 2015



Hürriyet Ege  
Aralık 2014



Mimarlık Dergisi  
Kasım-Aralık 2014



XXI  
Kasım 2014



İzmir Büyükşehir  
Eylül 2014





Gayrimenkul Türkiye  
Temmuz-Ağustos 2014



3+1  
Haziran 2014



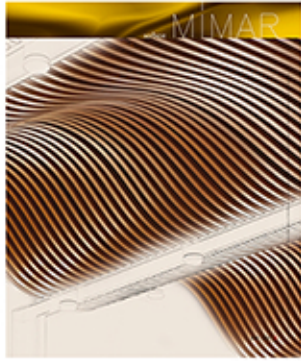
Yapi  
Mayıs 2014



Yapıda Ekoloji  
Nisan 2014



Seramik Türkiye  
Mart-Haziran 2014



Serbest Mimar  
Ocak 2014



XXI Yeşil Binalar Referans  
Rehberi - 2014



Yapi  
Aralık 2013



Serbest Mimar  
Ağustos 2013



Yapi  
Haziran 2013



XXI Yeşil Binalar Referans  
Rehberi - 2013



Betonart  
Mart 2013



Serbest Mimar  
Mart 2013



XXI  
Şubat 2013



İzmir Life  
Aralık 2012



Mimarlık  
Kasım-Aralık 2012



Mimarlık  
Mayıs-Haziran 2012





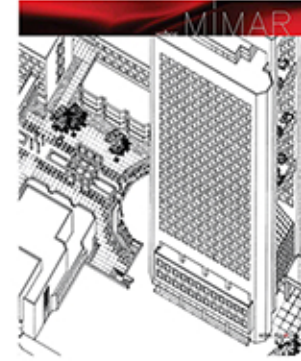
Yapi  
Ekim 2012



Hürriyet Ege  
Ağustos 2012



Yapi Peyzaj Tasarım Eki  
Ağustos 2012



Serbest Mimar  
Haziran 2012



Yapi  
Mayıs 2012



XXI  
Nisan 2012



Arredamento Mimarlık  
Mart 2012



Vitra Çağdaş Mimarlık Dizisi  
'Ticari Yapılar' - 2012



Yapi  
Aralık 2011



XXI  
Kasım 2011



Yapi  
Eylül 2011



Betonart  
Temmuz 2011



RAF  
Temmuz 2011



Arredamento Mimarlık  
Temmuz-Ağustos 2011



Ulusal Mimarlık Ödülleri 2010



XXI  
Haziran 2011



XXI  
Şubat 2011



Arredamento Mimarlık  
Şubat 2011



İzmir Mimarlık Ödülleri  
2010



Yapi  
Ağustos 2010





Mimar Odası Yayını  
Ocak 2010



Denizli Hükümet Konağı  
Yarışması Kitabı - 2009



Arkitera Mimarlık Almanacağı  
2009



Serbest Mimar  
Nisan 2009



Ulusal Mimarlık Ödülleri  
2008



Mimarlık  
Kasım-Aralık 2008



Maison Francaise  
Haziran 2008



İzmir SMD İzmir Mimarlık  
Buluşmaları - 2007



İnşaat & Yatırım  
Haziran 2007



Maison Francaise  
Nisan 2007



Home Art  
Nisan 2007



Ege Life  
Mart 2007



Ege Mimarlık  
Ocak-Şubat 2007



İnşaat & Yatırım  
Aralık 2006



İnşaat & Yatırım  
Ağustos 2006



Tansiyon  
2005







M artı D Mimarlık İnş. San. Tic.Ltd. Şti  
1479 Sk. N:1 Gül Apt. K:5 D:5 Alsancak/İZMİR  
Tel: 0232 463 91 01 Fax: 0232 463 99 77  
e-mail: [info@martid.com](mailto:info@martid.com)  
[www.martid.com](http://www.martid.com)